



Beacon Tower, SW18

£575,000

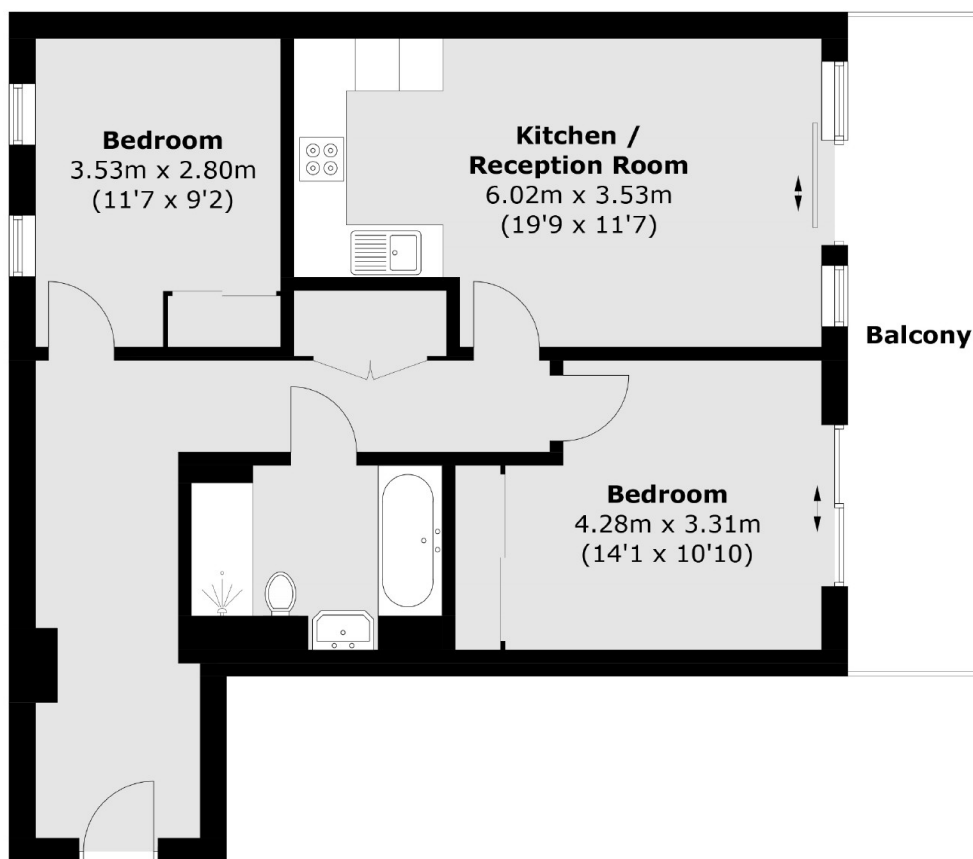
A lovely purpose built apartment with an open plan reception room, two double bedrooms and a large south facing balcony with ample space for a table and chairs.

Beacon Tower is located in the sought after Filaments Development in the heart of Wandsworth by the vibrant Southside shopping centre.

Features

- 724 sq ft
- 20ft Open Plan Reception
- Two Double Bedrooms
- South Facing Balcony
- Four Piece Bathroom
- Excellent Location

Beacon Tower, Wandsworth, SW18



Total area (approx.): 67.3 sq. m (724.4 sq. ft)
Balcony : 11.2 sq. m (120.5 sq. ft)