



Roehampton Lane, SW15

£699,999

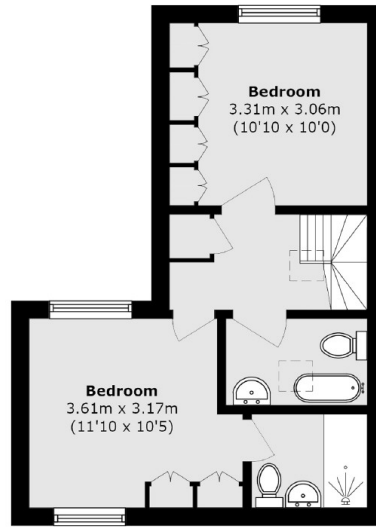
An extremely unique town house arranged over three floors with a spacious reception, eat in kitchen, four bedrooms, three bathrooms and a south facing garden as well as a private rear terrace.

This wonderful home is tucked away in a small development on Roehampton Lane moments from the local High Street, University, & Putney Heath. The property also benefits from excellent transport links to Kingston, Putney and Barnes and easy access to Queen Mary Hospital.

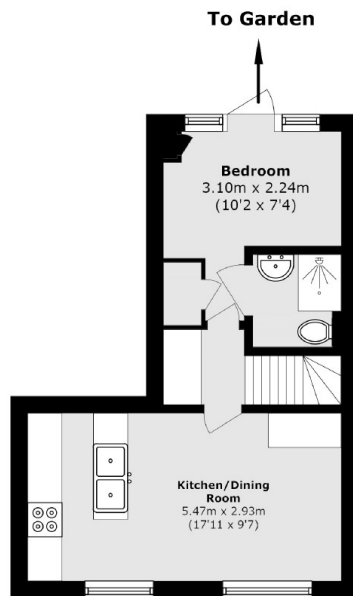
Features

Almost 1200 sq ft
19ft Reception Room
18ft Eat in Kitchen
Four Bedrooms
Three Bathrooms & WC
Garden & Terrace

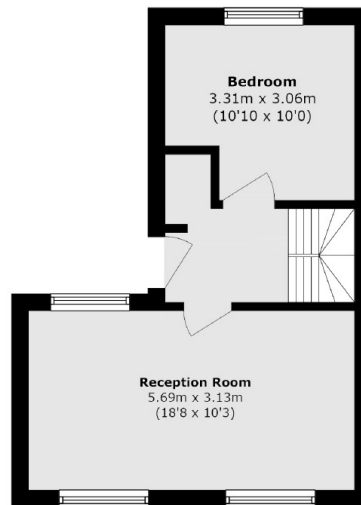
Roehampton Lane, London, SW15



First Floor



Lower Ground Floor



Ground Floor

Total area (approx.): 100.3 sq. m (1079.6 sq. ft)