

Point Pleasant, SW18

£550,000

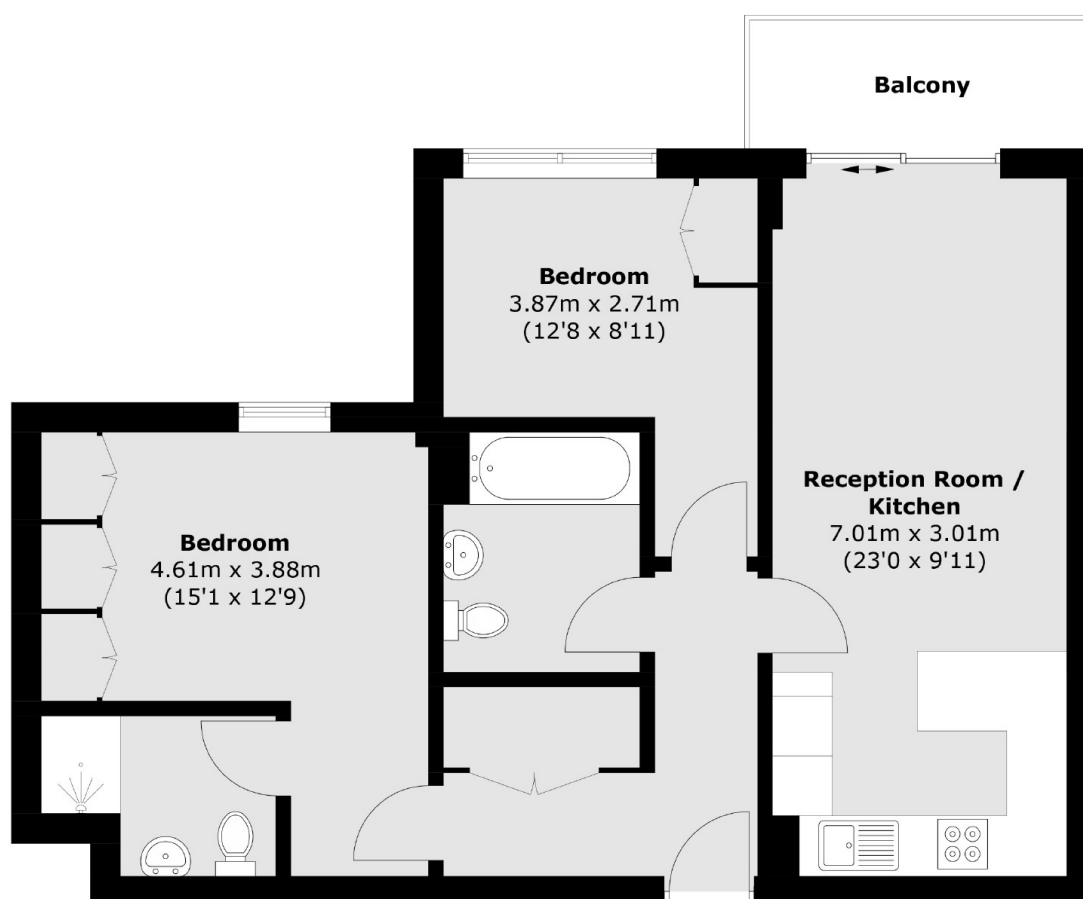
A beautifully presented two bedroom purpose built apartment with private terrace overlooking communal gardens & private secure parking, located moments from the River Thames.

Point Pleasant is a modern block located by the banks of the Thames & Wandsworth Park, so ideal for easy access to East Putney station and Wandsworth Town.

Features

- New Kitchen
- Double Bedrooms
- Underground Parking
- Balcony
- Communal Terrace & Gardens
- Riverside Location

Point Pleasant, London, SW18



Total area (approx.): 61.7 sq. m (664.1 sq. ft)
Balcony: 4.4 sq. m (47.4 sq. ft)