



Tildesley Road, SW15

£325,000

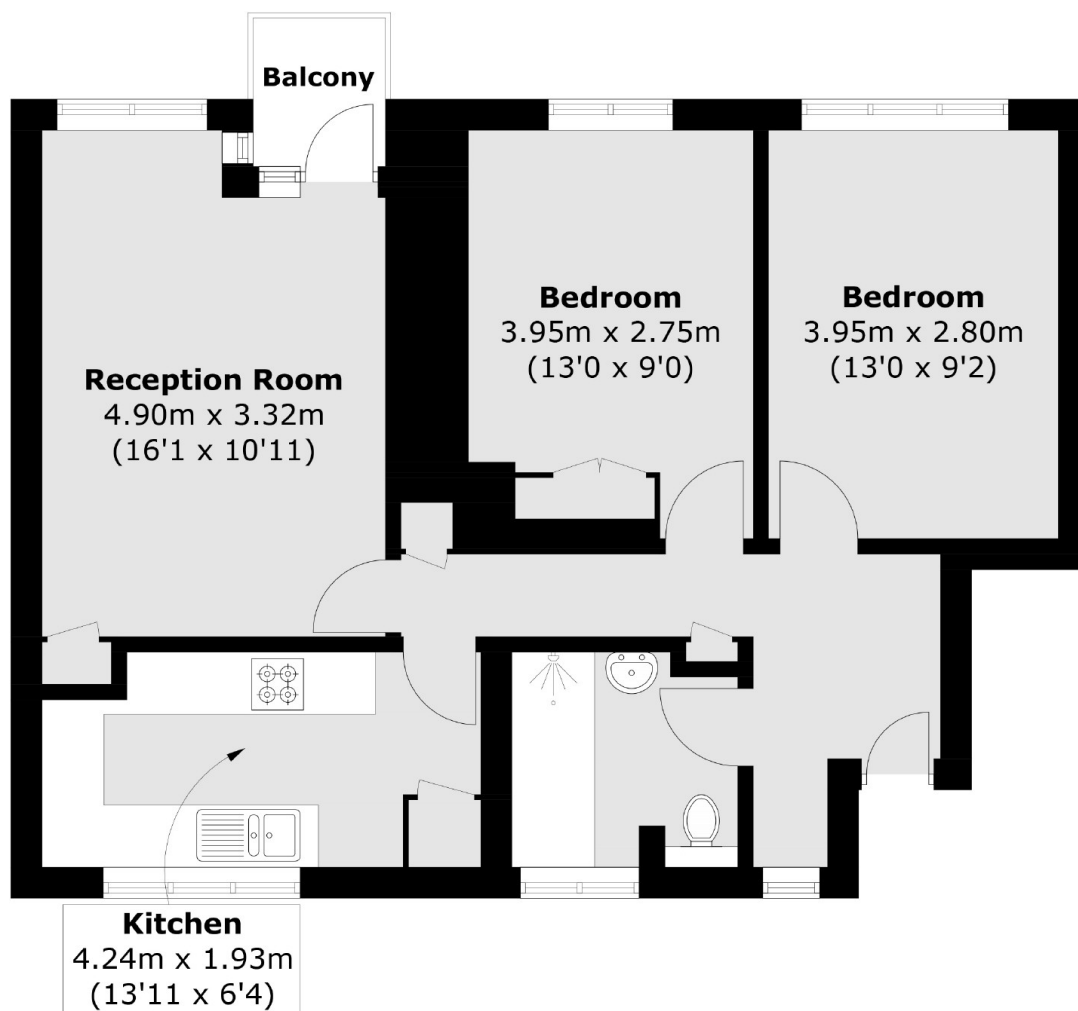
This spacious two bedroom flat is nicely positioned on the Ashburton Estate and has a balcony overlooking green space. The flat has double glazing. The block has had a new entry system, a refurbished roof and upgraded lift in recent years.

Tildesley Road is part of the Ashburton Estate that was built in the late 1950s on the site of Gifford House, a country house that had been abandoned after being used as a military hospital during World War One.

Features

- Two Bedrooms
- Fourth Floor
- Ex-Local Authority
- Quiet Location
- Private Balcony

Tildesley Road, London, SW15



Total area (approx.): 63.9 sq. m (687.8 sq. ft)
Balcony: 1.8 sq. m (19.4 sq. ft)