



Chapman Square, SW19

£735,000

A 1000 sq ft three bedroom apartment with two bathrooms, west facing balcony and secure underground parking located in a private gated development by Putney Heath & Wimbledon Common.

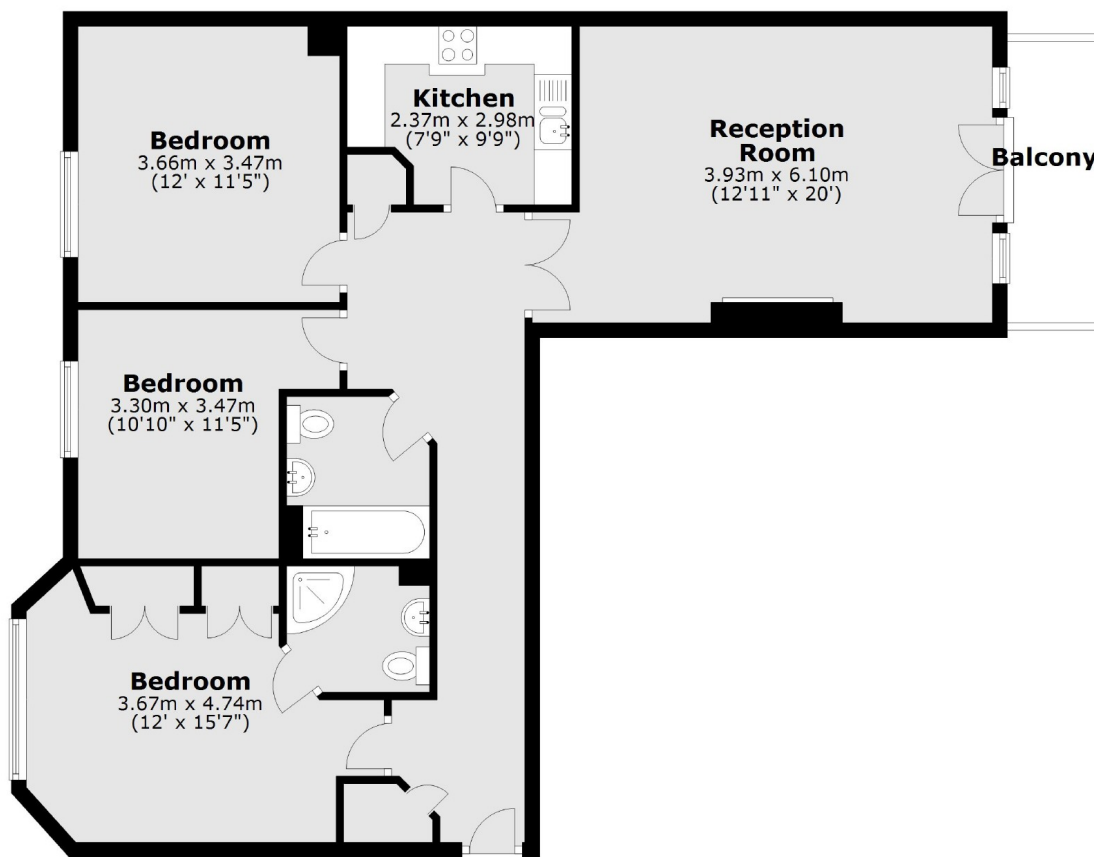
Chapman Square is a sought after development which is ideally located for easy access into Wimbledon Village, Wimbledon Common, the AELTC Tennis Club & Southfields station.

Features

- Three Bedrooms
- Two Bathrooms
- Concierge Service
- Underground Parking
- Communal Gardens
- No Onward Chain

Chapman Square, London, SW19

Third Floor



Main area: Approx. 90.7 sq. metres (976.0 sq. feet)
Plus balconies, approx. 4.9 sq. metres (53.1 sq. feet)