



## Wildcroft Road, SW15

### £799,999

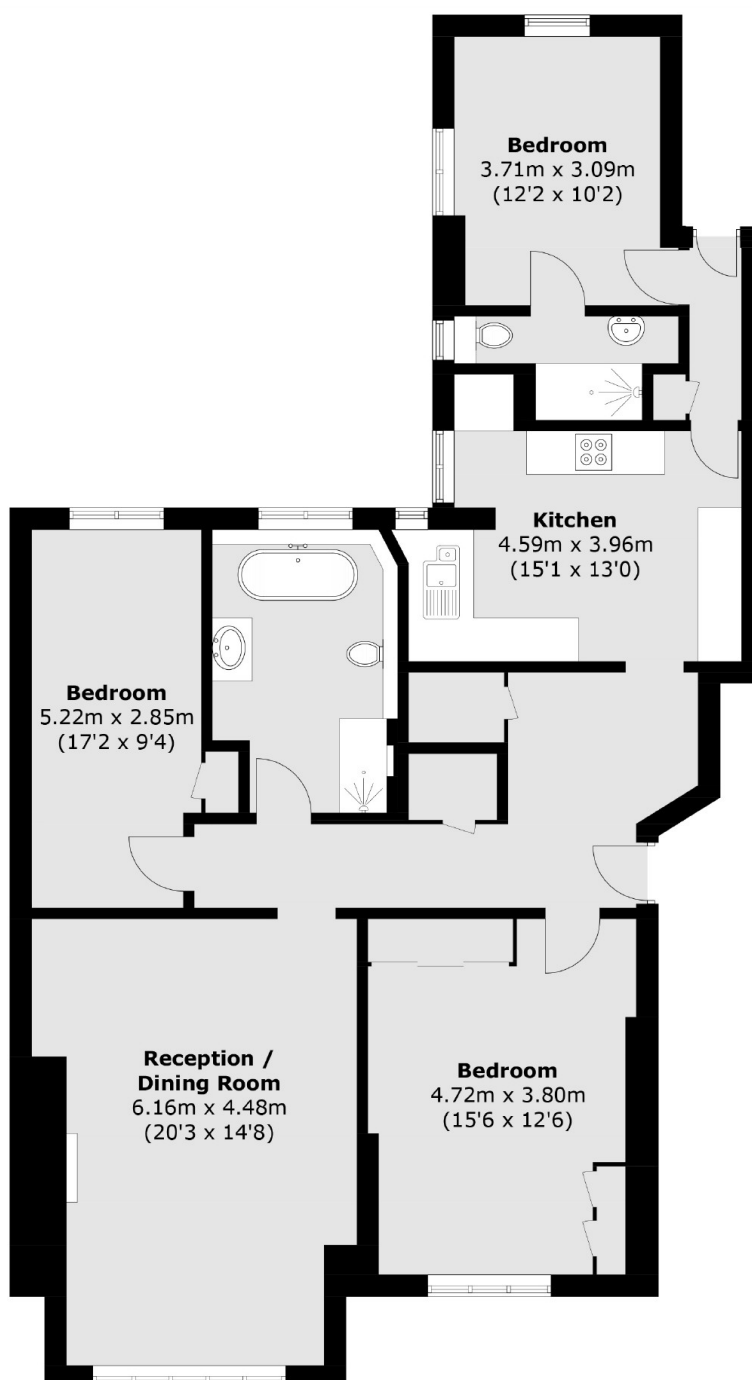
This stylish three bedroom flat on the third floor of a wonderful mock Tudor block, has a share of the freehold with a long lease, communal gardens and a garage.

Wildcroft Manor is located just by the green open spaces of Putney Heath by the famous Telegraph pub. Access into Putney is easy with Wimbledon not far away either and the A3 on your doorstep.

### Features

- Three Bedrooms
- Two Bathrooms
- Modern Kitchen
- Share of Freehold
- Garage
- Communal Garden

# Wildcroft Road, London, SW15



Total area (approx.): 116.8 sq. m (1,257.2 sq. ft)

## Dexters

Putney  
176 Putney High Street  
London  
SW15 1RS  
Sales  
020 8789 9999

Energy Rating: E. We aim to make our particulars both accurate and reliable. However they are not guaranteed; nor do they form part of an offer or contract. If you require clarification on any points then please contact us, especially if you're traveling some distance to view. Please note that appliances and heating systems have not been tested and therefore no warranties can be given as to their good working order.

 **RICS** | Regulated  
Estate Agent  
and Letting Agent

[dexters.co.uk](https://www.dexters.co.uk)