



Upper Richmond Road, SW15 £550,000

Set within a charming detached Victorian villa, this elegant first-floor conversion flat offers two bedrooms, one bathroom, and a spacious layout. The property benefits from a private garage and a remarkable 999-year lease, combining period charm with modern convenience.

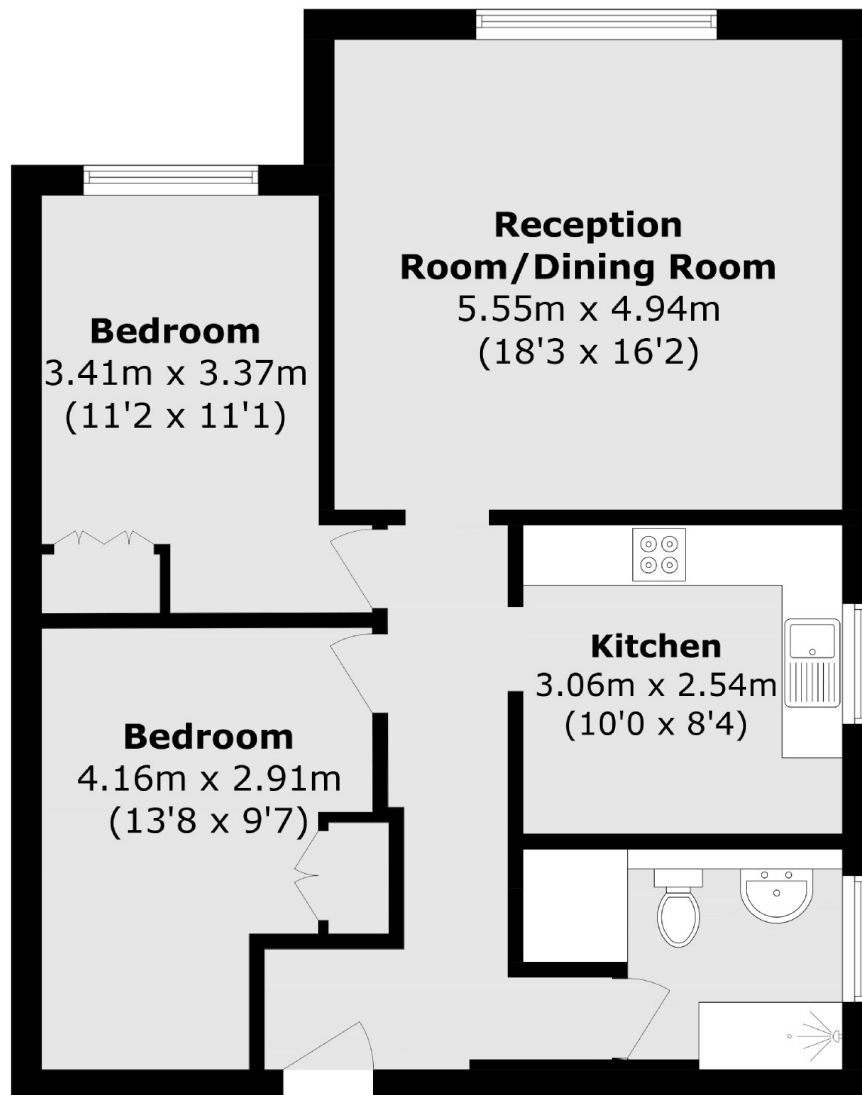
Located on Upper Richmond Road, SW15, this property enjoys excellent transport links, with Putney and Barnes stations nearby, as well as a range of shops, cafes, and green spaces, making it perfect for professionals or small families.

Features

Victorian conversion
Private garage

Period features

Upper Richmond Road, London, SW15



Total area (approx.): 77.0 sq. m (828.8 sq. ft)