



Pipit Drive, SW15

£1,050,000

Dexters



Pipit Drive, SW15

An stylish, modern three bedroom townhouse in a prestigious gated development in Putney.

On the ground floor there is a spacious hallway leading into an open plan kitchen and dining area and a WC. On the first floor is a bright reception room and a double bedroom/study with access to the private south facing roof terrace. The top floor has two large double bedrooms, one with an en-suite bathroom, and a family bathroom. The house has an allocated parking space, a garage and underfloor heating.

Pipit Drive is a private road about 750 metres from Putney Station and High Street. Richmond Park and Putney Heath are also nearby. The house is surrounded by outstanding and good Ofsted rated schools.

Features

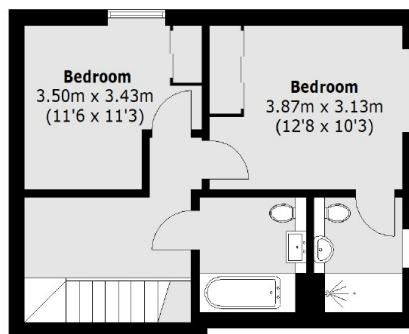
- Three Bedrooms
- Two Bathrooms
- Off-Street Parking
- Gated Development
- Roof Terrace
- Modern House



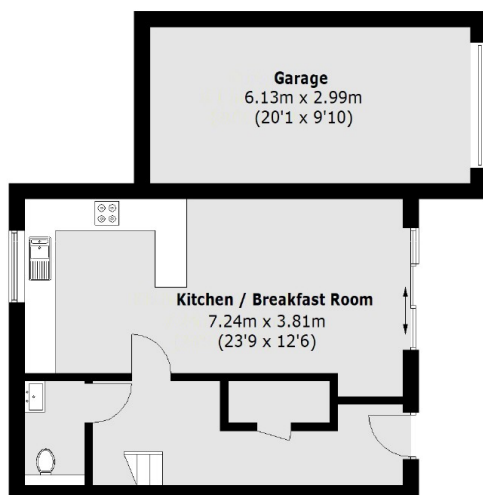




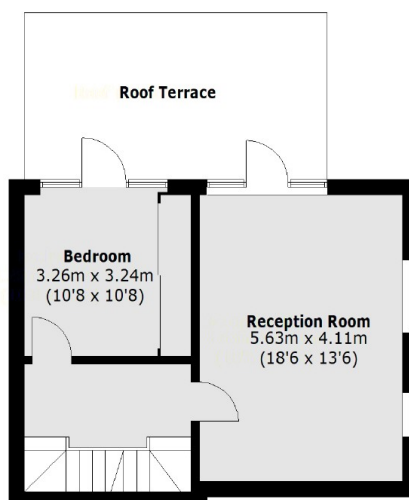
Pipit Drive, London, SW15



Second Floor



Ground Floor



First Floor

Total area (approx.): 122.9 sq. m (1,322.9 sq. ft)

Garage area: 18.4 sq. m (198.0 sq. ft)

Roof Terrace area: 18.6 sq. m (200.2 sq. ft)