



Osiers Road, SW18

£575,000

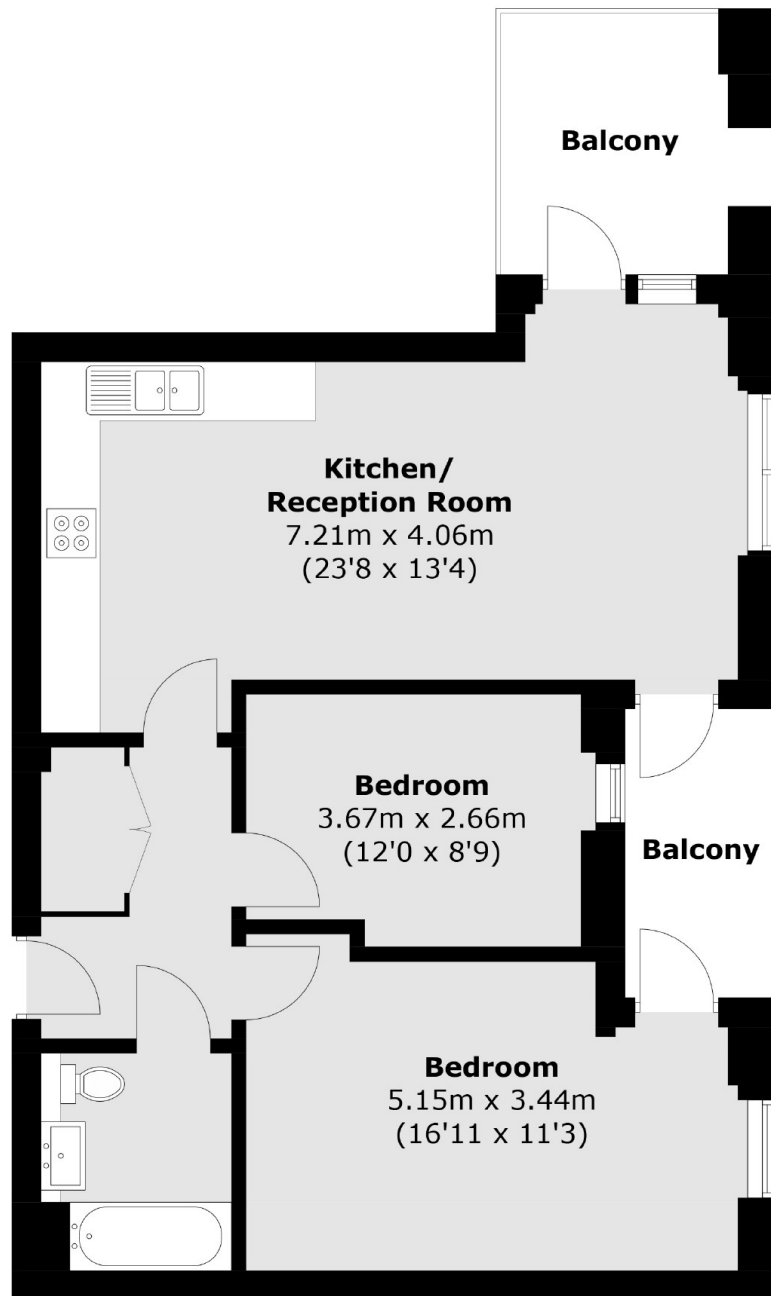
This stylish flat was built by Taylor Wimpey in 2019 and has two bedrooms and two balconies. The flat is on the seventh floor with scenic views and there is a 125 year lease from 2015.

Osiers Road is part of the Riverside Quarter between Putney and Wandsworth Town. The RiverBoat is stops there and Wandsworth Park is just around the corner.

Features

Two Bedrooms
One Bathroom
Seventh Floor
Stylish Design
Long Lease
Great Location

Osiers Road,
London, SW18



Total area (approx.): 63.3 sq. m (681.3 sq. ft)
Balcony: 10.9 sq. m (117.3 sq. ft)

Dexters

Putney
176 Putney High Street
London
SW15 1RS
Sales
020 8789 9999

Energy Rating: B. We aim to make our particulars both accurate and reliable. However they are not guaranteed; nor do they form part of an offer or contract. If you require clarification on any points then please contact us, especially if you're traveling some distance to view. Please note that appliances and heating systems have not been tested and therefore no warranties can be given as to their good working order.

 **RICS** | Regulated
Estate Agent
and Letting Agent

[dexters.co.uk](https://www.dexters.co.uk)