



Putney Bridge Road, SW18

£699,950

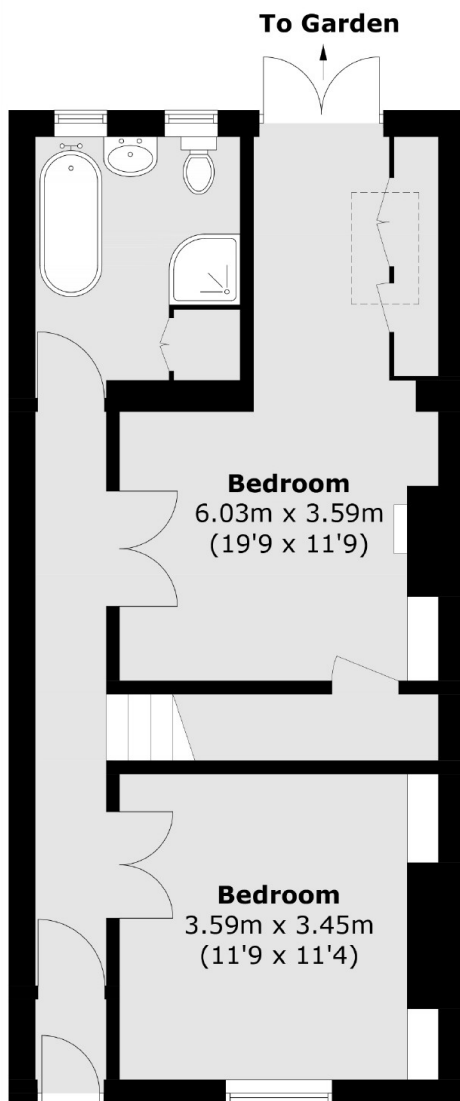
This charming freehold Victorian cottage is full of character, featuring a spacious garden and a fantastic location next to Wandsworth Park. The property boasts a unique yet practical layout, with two bedrooms and a bathroom on the ground floor, while the upstairs living room impresses with vaulted ceilings.

Putney Bridge Road connects Wandsworth Town to Putney Bridge, with Riverside Quarter, Wandsworth Park, and East Putney all nearby.

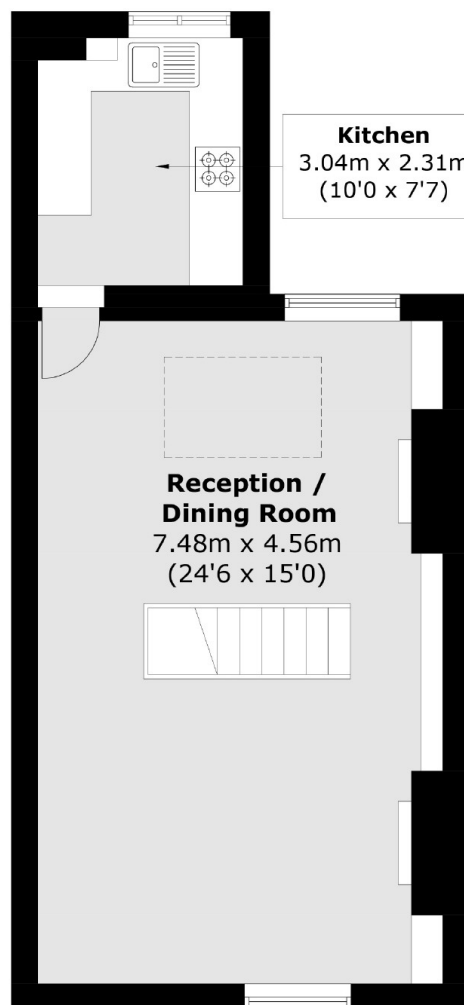
Features

- Two Bedroom
- Victorian Cottage
- Large Garden
- Period Features
- No Chain
- Freehold

Putney Bridge Road, London, SW18



Ground Floor



First Floor

Total area (approx.): 90.1 sq. m (969.8 sq. ft)