

Westleigh Avenue, SW15

£780,000

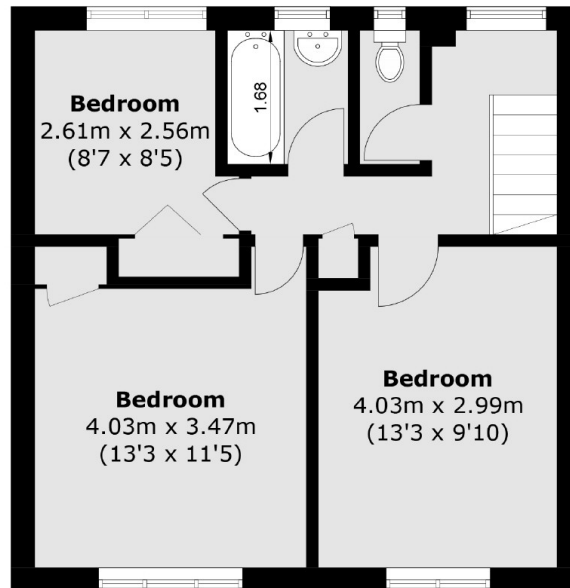
Charming mid-century terraced house with three bedrooms, unmodernised and full of potential for a personal touch and modern updates. Ideal for those seeking a renovation project in a desirable area.

Westleigh Avenue is nestled in a desirable part of SW15, known for its leafy streets, family-friendly atmosphere, and proximity to excellent amenities. Nearby green spaces like Putney Heath and Richmond Park provide ample opportunities for outdoor activities, while good schools and convenient transport links make it an appealing location for families and professionals alike.

Features

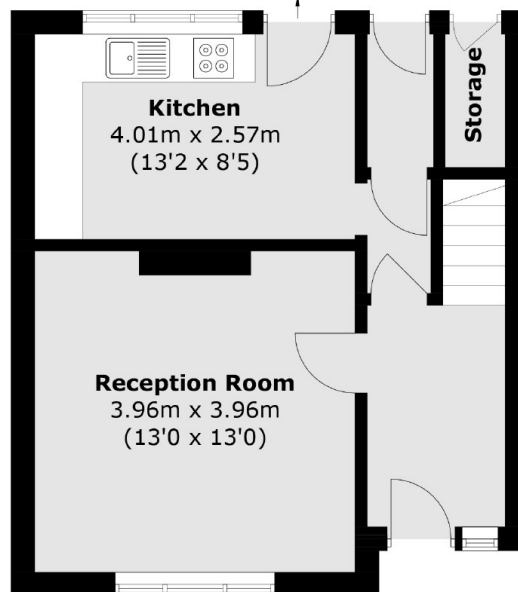
Mid Century
Terraced
Front & Back Garden
Three Bedrooms
Garden
Freehold

Westleigh Avenue, London, SW15



First Floor

To Garden



Ground Floor

Approx Internal Area: 81.5 sq. m (877.3 sq. ft)

Storage: 1.3 sq. m (14.0 sq. ft)