



West Hill, SW15

£635,000

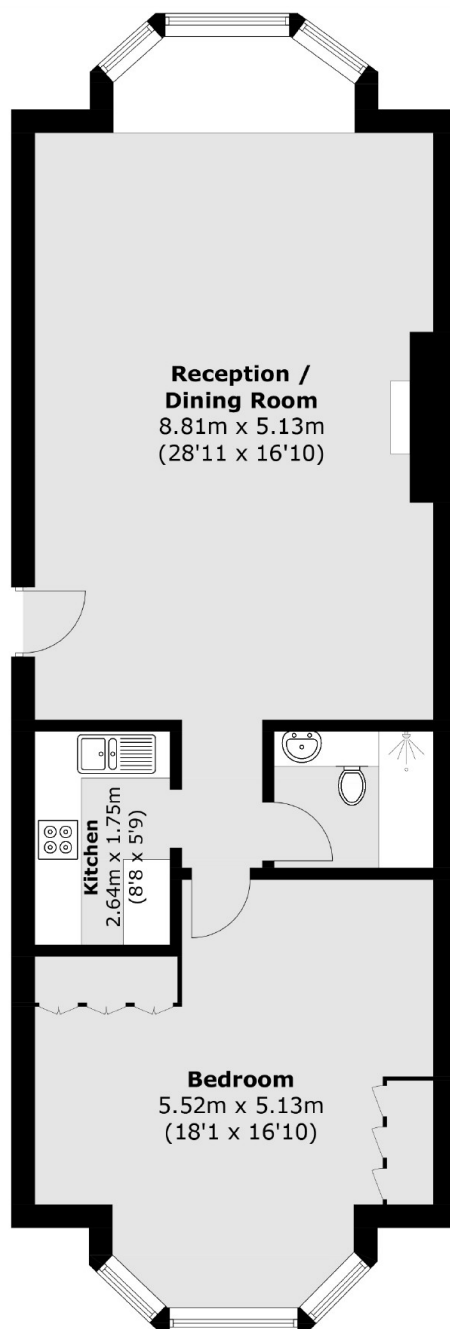
A truly unique one bedroom apartment forming part of a stunning Grade II Listed villa set within the extensive communal gardens and grounds of Whiteland's Park which was designed by Sir Giles Gilbert Scott.

The property is set back from West Hill, within close proximity of East Putney underground and Putney mainline further down the High Street. You are also not far from Wandsworth Town Centre, Wimbledon Village & also Wimbledon Common.

Features

- 800 + sq ft
- 25ft Reception Room
- Stunning Features
- Private Parking
- Residents Gym & Library
- No Chain

West Hill, London, SW15



Total area (approx.): 78.1 sq. m (840.7 sq. ft)

Dexters

Putney
176 Putney High Street
London
SW15 1RS
Sales
020 8789 9999

Energy Rating: E. We aim to make our particulars both accurate and reliable. However they are not guaranteed; nor do they form part of an offer or contract. If you require clarification on any points then please contact us, especially if you're traveling some distance to view. Please note that appliances and heating systems have not been tested and therefore no warranties can be given as to their good working order.

 **RICS** | Regulated
Estate Agent
and Letting Agent

[dexters.co.uk](https://www.dexters.co.uk)