



Bramcote Road, SW15

£400,000

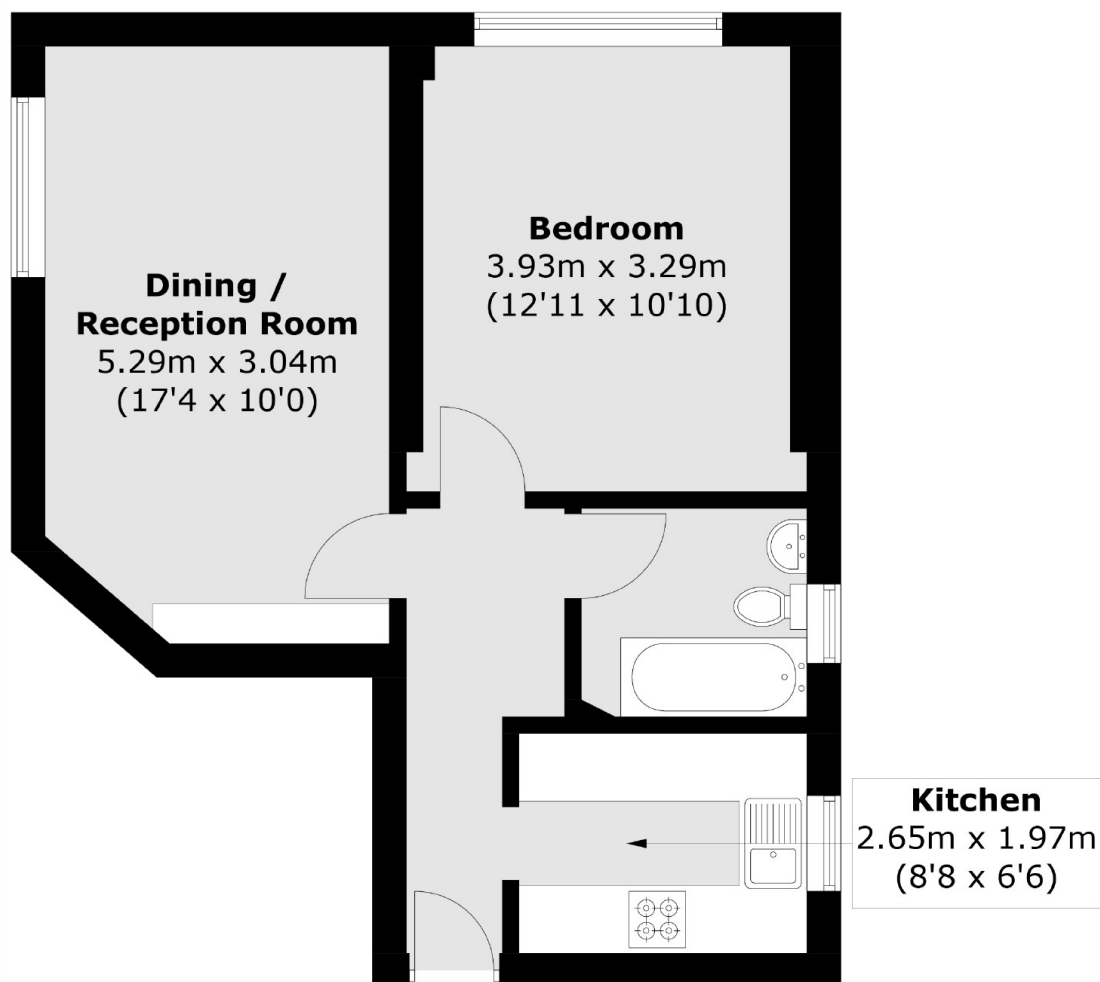
This first floor apartment with one bedroom is in a prestigious West Putney location and has a 189 year lease from 1981. There is a communal garden, a modern kitchen and both the living room and bedroom benefit from plenty of sunlight.

Bramcote Road is in West Putney, off Upper Richmond Road. Barnes Common is nearby as is Richmond Park. There are plenty of buses that stop on Upper Richmond Road to Putney, Clapham Junction, Richmond, South Kensington to name a few destinations.

Features

- First Floor
- One Bedroom
- 189 Year Lease
- Communal Garden
- Fantastic Location
- Modern Kitchen

Bramcote Road, London, SW15



Total area (approx.): 44.6 sq. m (480.1 sq. ft)