



Downbury Mews, SW18

£799,999

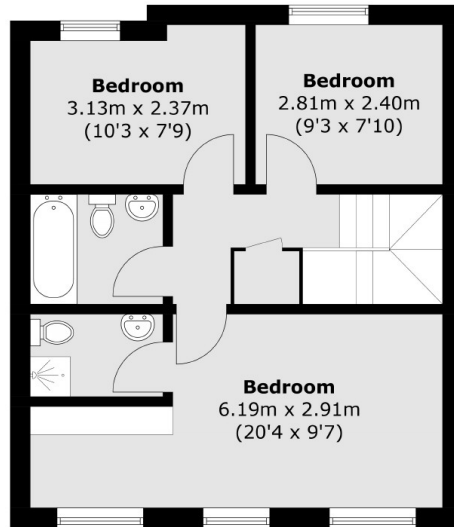
A 1220 sq ft home with an abundant amount of potential set within a small Mews located moments from Wandsworth Town Centre.

Downbury Mews is located moments away from the High Street, Wandsworth's Southside Shopping Centre, King George's Park, the Thames Pathway & also has the choice of either Wandsworth Town or East Putney stations to choose from.

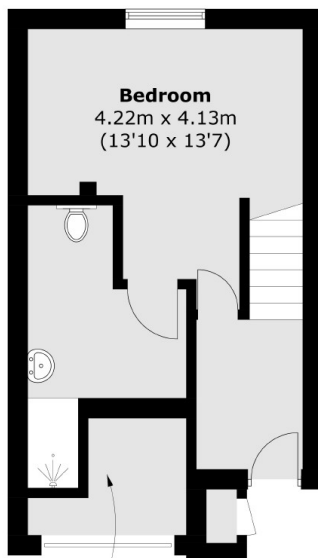
Features

23ft Open Plan Reception
Four Double Bedrooms
Three Bathrooms
Balcony
Off Street Parking
No Chain

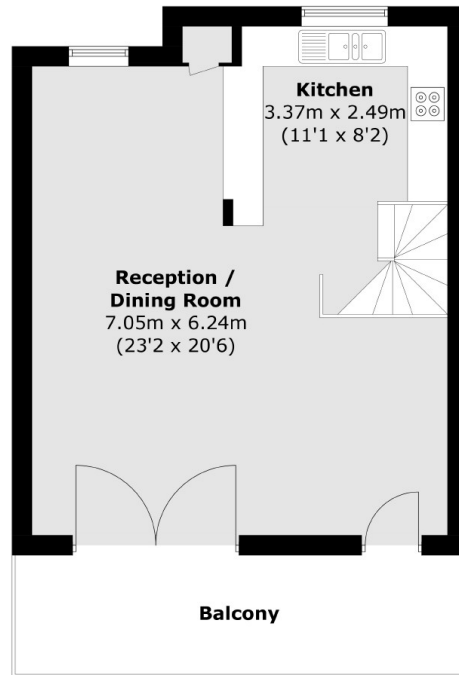
Downbury Mews, London, SW18



Second Floor



Ground Floor



First Floor

Total area (approx.): 117.1 sq. m (1,260.4 sq. ft)
External Cupboard & Garage : 3.5 sq. m (37.7 sq. ft)
Balcony: 12.1 sq. m (130.2 sq. ft)