

Seymour Road, SW18

£425,000

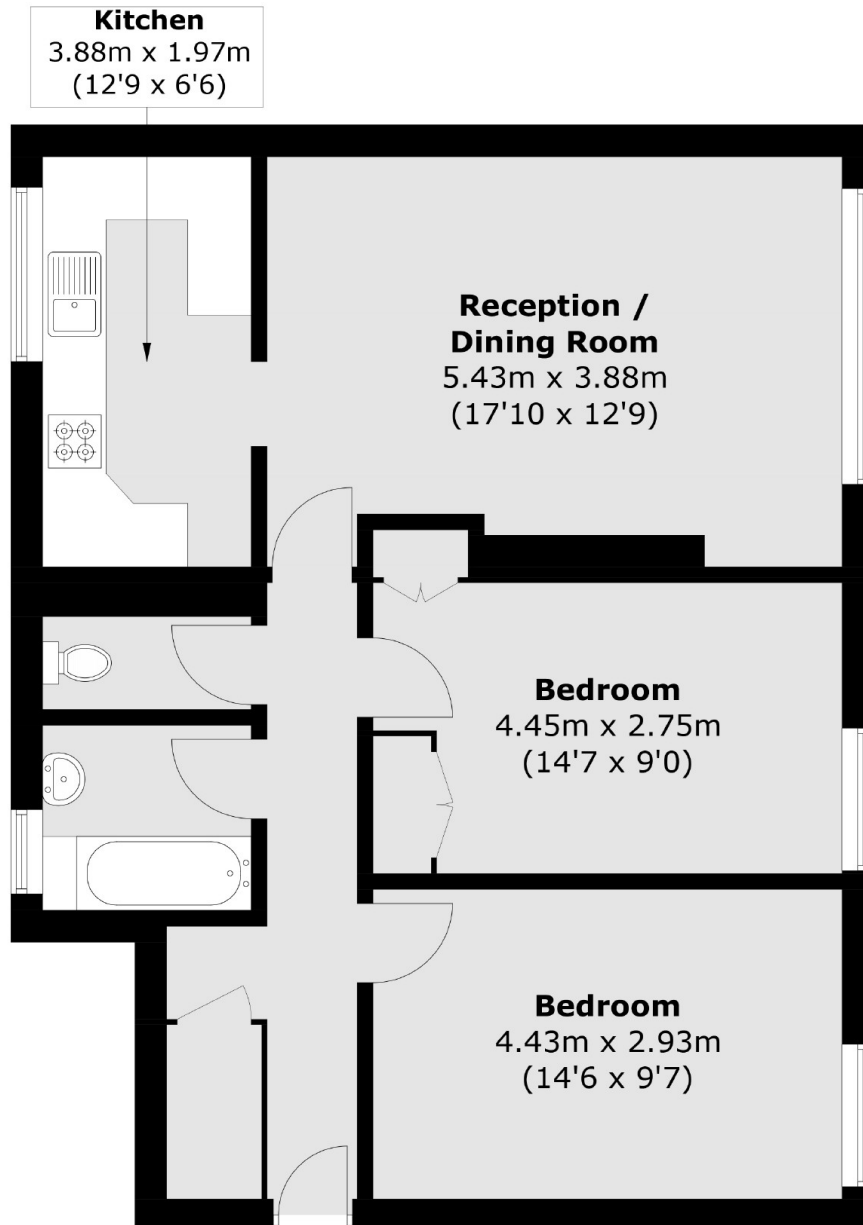
An almost 800 sq ft two double bedroom purpose built apartment in a great location within easy reach of both Southfields & Wandsworth town centres.

Seymour Road is a sought after location being that its only moments away from King George's Park, as well as the shops, bars and restaurants of Putney, Wandsworth and Southfields.

Features

771 sq ft
18ft Reception Room
Two Double Bedrooms
Bathroom & WC
Communal Gardens
No Chain

Seymour Road, London, SW18



Total area (approx.): 71.4 sq. m (768.5 sq. ft)