



Westthorpe Road, SW15

£1,750,000

Dexters



Westhorpe Road, SW15

This lovely home is on the favoured west side of Westhorpe Road, one of the most popular streets in West Putney. The house has four bedrooms, two reception rooms, two bathrooms, a dressing room and a cellar. The characterful Victorian house has period features like fireplaces and sash windows. It includes shutters and stylish modern interiors.

With a York Stone front porch, the house has a traditional bay front; is mid-terrace and has a front gable roof. On the ground floor there are marble floor tiles, an open plan reception diner and a modern in-frame kitchen with Calacatta marble worktops. There is a further living room, currently used as a music room, to the rear of the house. Upstairs there are three bedrooms on the first floor, the front bedroom has its own dressing room and the main bathroom is tiled in Marron Emperador & Crema Light Marble. The loft is converted to provide a fourth bedroom and another large bathroom. The windows are double-glazed throughout. The garden is west facing and about 7.5 metres(25ft) long.

Westhorpe Road is between Felsham Road and Hotham Road in a prime spot of West Putney. Tube and train stations are within walking distance and many locals commute using the Riverboat from Putney Pier.

Features

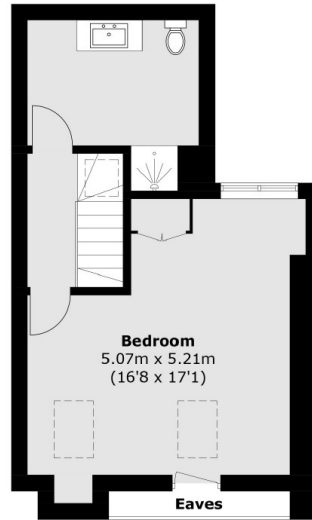
- West Facing Garden
- Freehold House
- Four Bedrooms
- Two Bathrooms
- Stylish Design
- 1999sq.ft / 185.7sq.m



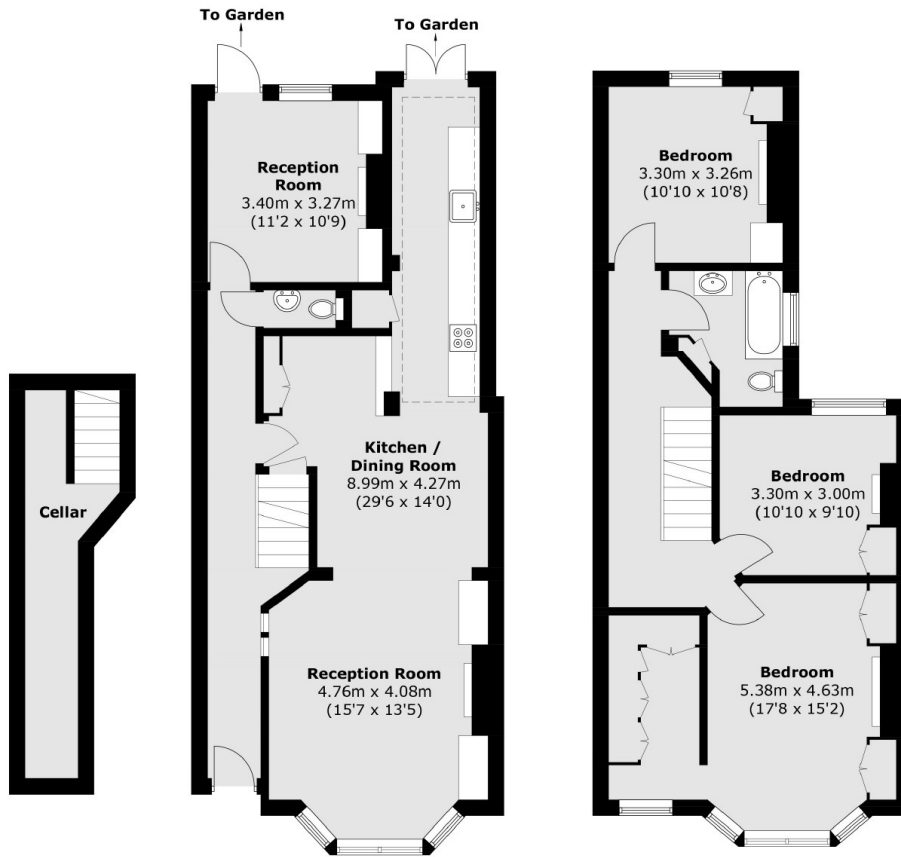




Westthorpe Road, London, SW15



Second Floor



**Lower
Ground Floor**

Ground Floor

First Floor