



Lower Richmond Road, SW15

£1,195,000

A natural four double bedroom Victorian family home in need of full refurbishment but with an unlimited amount of exciting potential & enviably located between Putney Bridge & Putney Common.

Lower Richmond Road connects Putney Bridge to Putney Common and is surrounded by a huge selection of popular cafes, shops, restaurants and public houses.

Features

- 1600 sq ft (un extended)
- Double Reception Room
- Eat in Kitchen
- Four Double Bedrooms
- Two Bathrooms
- South Facing Garden



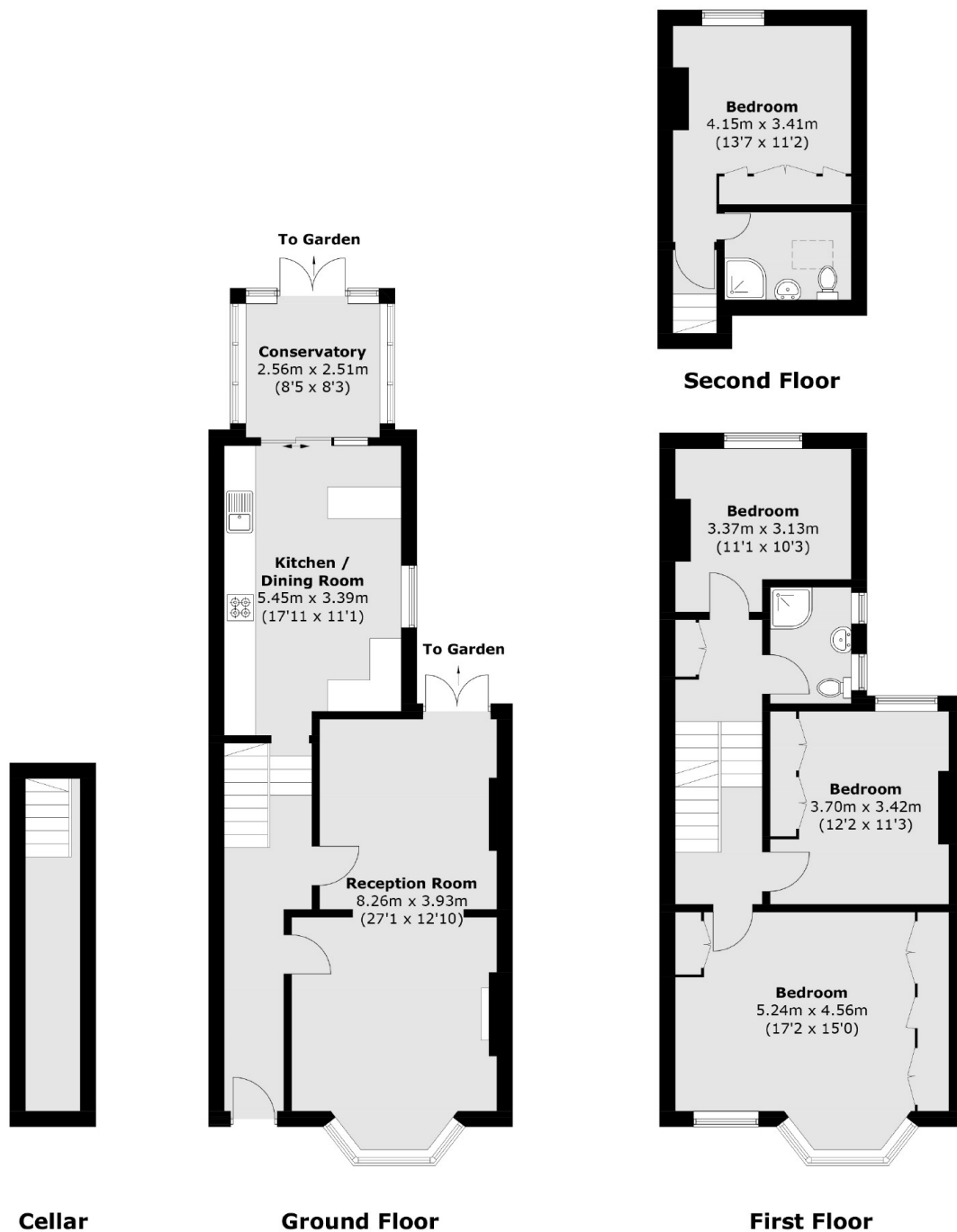
Lower Richmond Road, SW15

The property follows a somewhat traditional layout with some changes to its original floorplan. On the ground floor there is an open plan double reception room, an eat in kitchen/breakfast room and conservatory which leads out onto a well proportioned south facing patio garden. On the first floor there are three double bedrooms and a three piece family shower room. The fourth double bedroom along with another shower room occupying the top floor.

Further features of this home include a number of period features, cellar and possible vacant possession (tbc). That said its enviable location coupled with its potential to make significant improvements (subject to the required planning consents & approvals) are what really makes this property stand out.



Lower Richmond Road, London, SW15



Total area (approx.): 149.6 sq. m (1,610.2 sq. ft)
(Including Cellar)