

Frensham Drive, SW15

£725,000

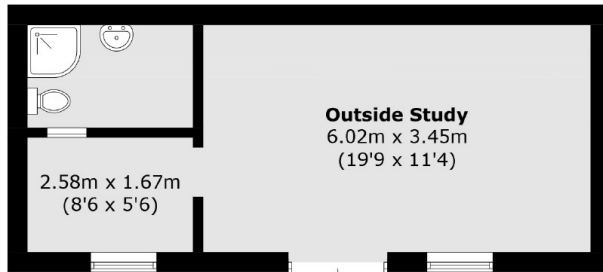
This freehold house was recently renovated by the current owners. There are three bedrooms, two bathrooms and a large garden. The house has a modern handleless kitchen, wood floors, a conservatory, windows with triple glazing, a gas fire and a large studio in the garden.

Frensham Drive is between Putney and Kingston, just off the A3. The 85 and 265 buses stop nearby and go into Putney or Kingston. The house is in Wandsworth Borough and therefore benefits from famously low council taxes.

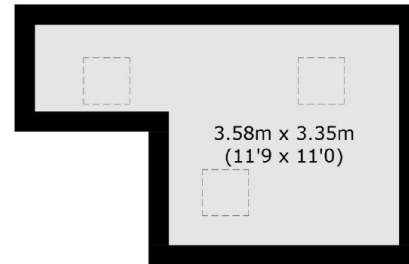
Features

- Three Bedrooms
- Two Bathrooms
- Freehold House
- Modern Kitchen
- Large Garden
- Wood Floors

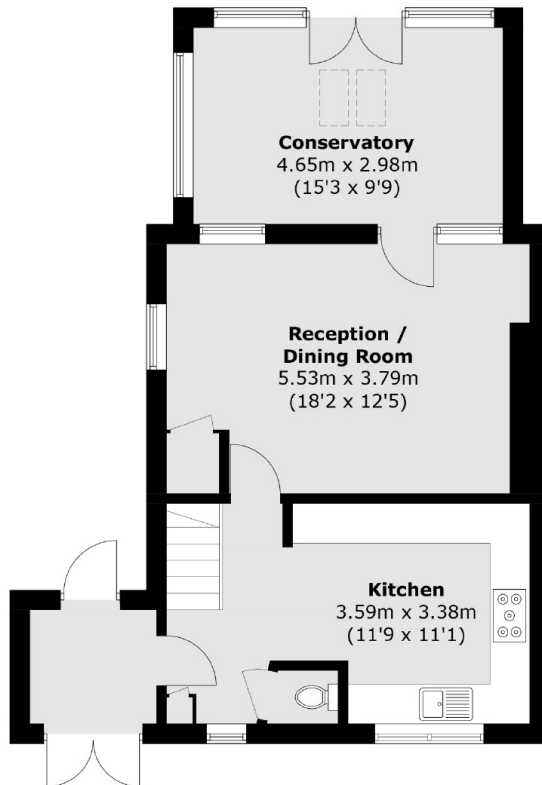
Frensham Drive, London, SW15



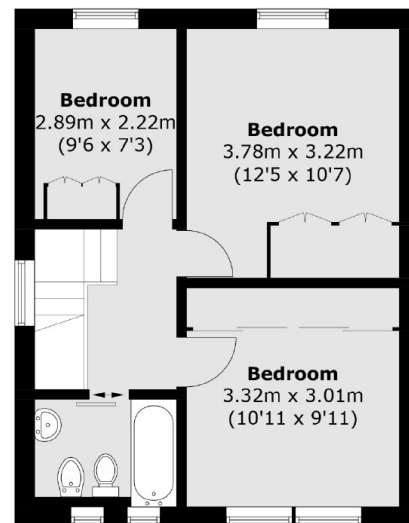
Ground Floor
(Not Shown In Actual Location / Orientation)



Loft



Ground Floor



First Floor

Total area (approx.): 114.0 sq. m (1,227.1 sq. ft)
Outbuilding area (approx.): 29.6 sq. m (318.6 sq. ft)