



Stroud Crescent, SW15

£695,000

An extremely well presented three bedroom purpose built freehold semi detached home with private garden located in a desirable location near to both Wimbledon & Putney Common as well as Richmond Park.

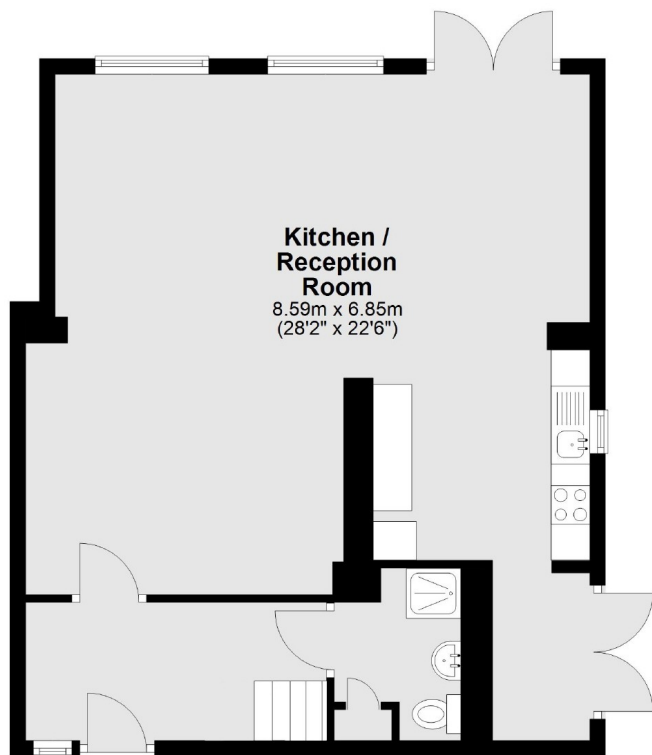
Stroud Crescent is a popular location due to its proximity to open green spaces and selection of excellent transport options nearby.

Features

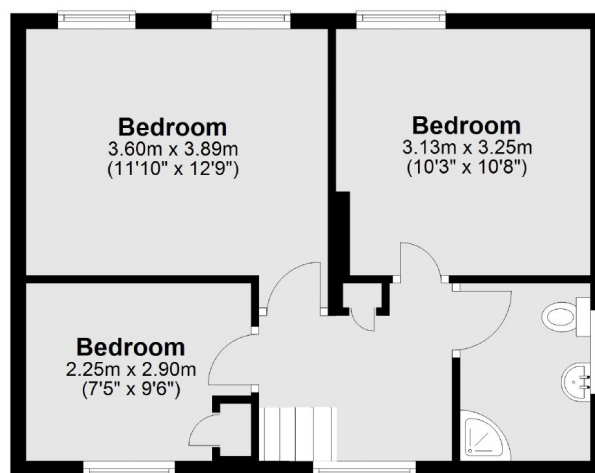
Arranged over two Floors
1100 sq ft
Open Plan Reception
Three Bedrooms
Garden
Great Location

Stroud Crescent, London, SW15

Ground Floor



First Floor



Total area: approx. 101.8 sq. metres (1095.3 sq. feet)