



Wildcroft Road, SW15

£1,100,000

Dexters



Wildcroft Road, SW15

A big apartment with four bedrooms in great condition on the second floor (with a lift) of Wildcroft Manor. The flat is quiet, bright & located close to Putney Heath & Richmond Park.

Wildcroft Manor was built in the 1930s where the previous manor, owned by Sir George Newnes, once stood. Putney Heath is widely regarded as the premier destination for suburban mansion flats.

Features

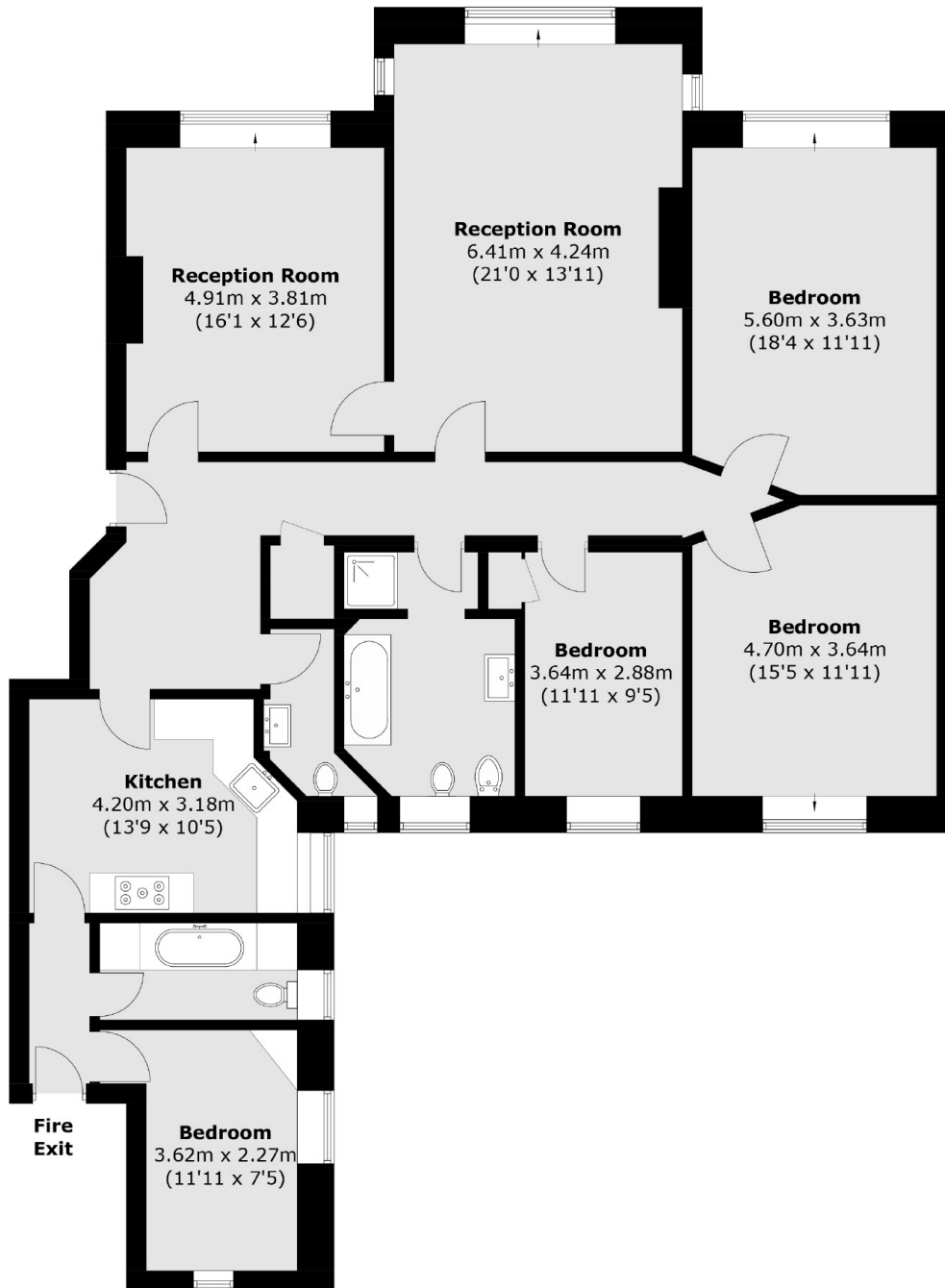
- Approx. 1,659 sq.ft
- Four Bedrooms
- Two Reception Rooms
- Two Bathrooms
- Second Floor
- 1930s Mansion







Wildcroft Road, London, SW15



Second Floor

Total area (approx.): 154.1 sq. m (1658.7 sq. ft)