



Balmoral Close, SW15

£950,000

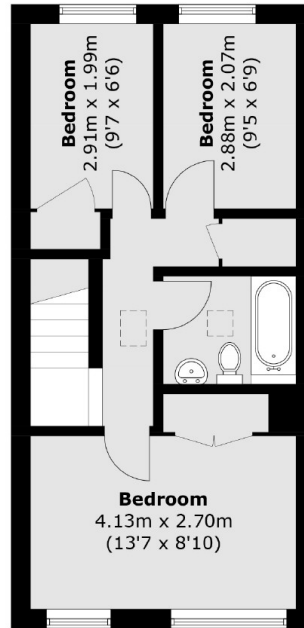
This 1970s town house is in a private road in a prime West Putney location and close to both Putney rail station and East Putney district line station. The house has mid-century style and modern additions including new windows, wooden floors and a modern kitchen and bathroom. There is parking and both a private garden and a professionally maintained communal garden.

Westleigh Avenue is just off Putney Hill, near to Putney High Street. Putney Heath is close by and there are numerous buses that stop at nearby.

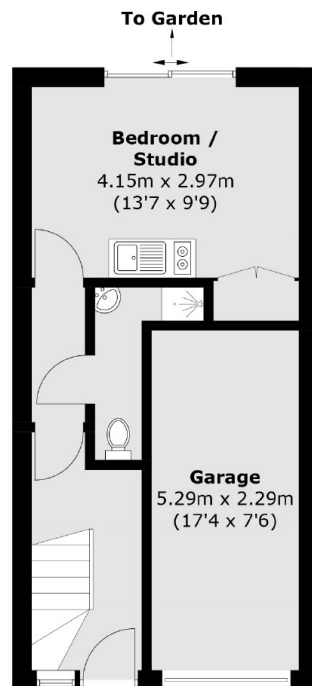
Features

- Freehold
- Parking
- Mid-Century Town House
- Garden
- Four Bedrooms
- Two Bathrooms

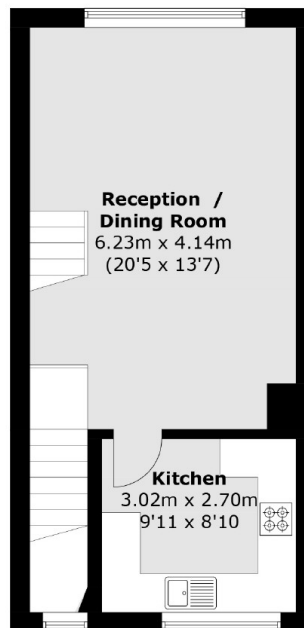
Balmoral Close, London, SW15



Second Floor



Ground Floor



First Floor

Total area (approx.): 113.3 sq. m (1,219.5 sq. ft)
(Including Garage)