



## West Hill, SW15

£550,000

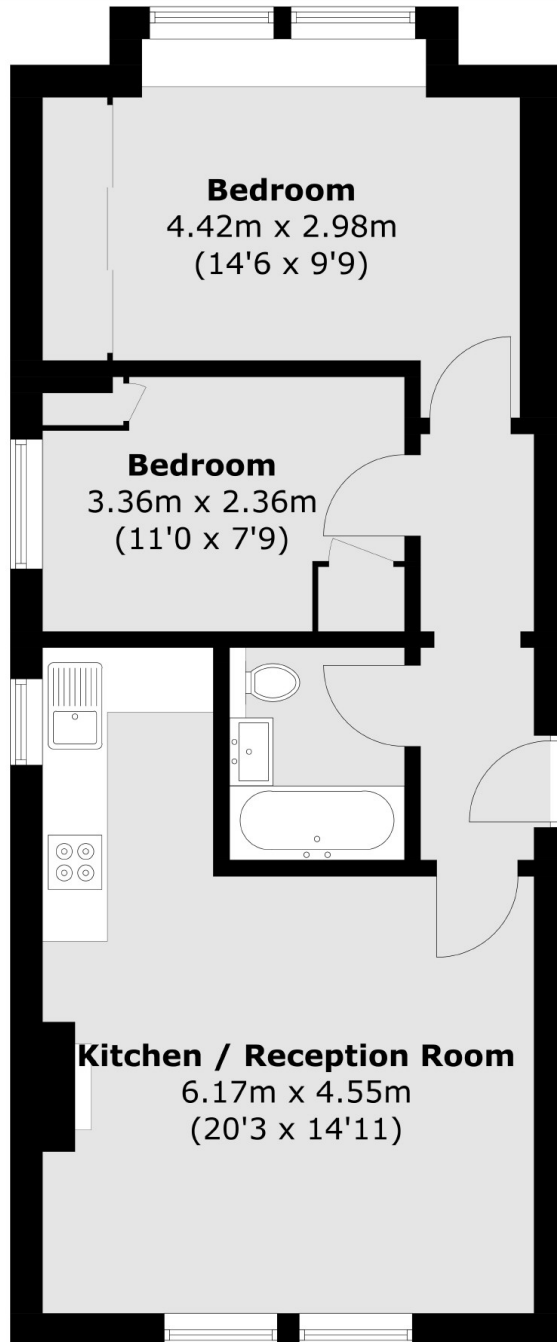
This two bedroom apartment is on the first floor of a good-looking Victorian Villa and has off-street parking, a share of the freehold and access to a garden at the rear. The flat is stylish and has a modern kitchen along with period features.

The flat is between Putney, Wandsworth Town and Southfields. East Putney (district line) is really close by and Wandsworth Park is just down the road.

### Features

- Two Bedrooms
- First Floor
- Victorian Conversion
- Parking
- Garden
- Share of Freehold

# West Hill, London, SW15



Total area (approx.): 52.4 sq. m (564.0 sq. ft)