



Frogmore, SW18

£975,000

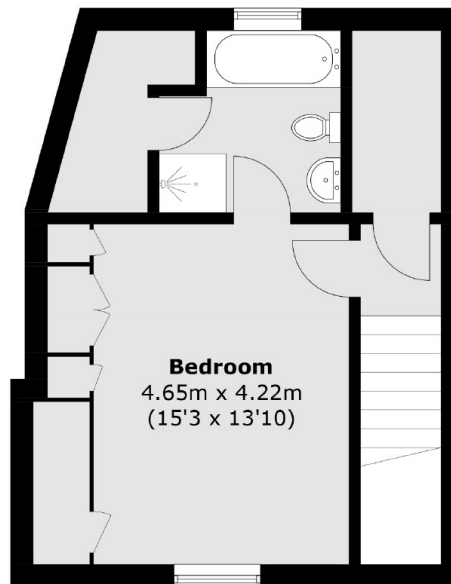
An exceptional semi-detached house boasting a spacious layout. This property comprises three generously sized double bedrooms and two modern bathrooms. The open-plan living area offers ample space for both living and dining. Step outside to discover a private garden with built-in seating space and a shed, perfect for outdoor gatherings or moments of relaxation. Furthermore, there is plenty of storage space throughout the property. Presented in excellent condition, this home is ready to move into.

Positioned for convenient access to Wandsworth Southside and Wandsworth Town station and a short walk to East Putney Tube.

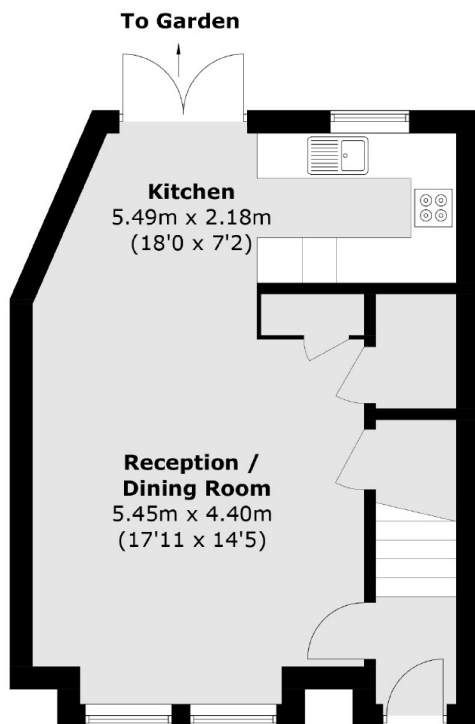
Features

- Semi detached
- Three Double Bedrooms
- Two Bathrooms
- Open Plan Living area
- Private garden
- Excellent Condition

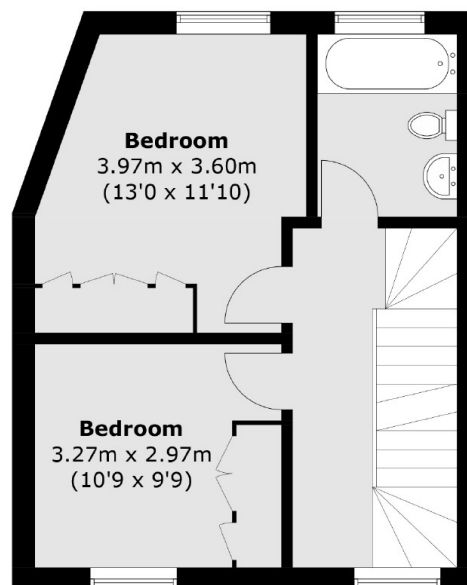
Frogmore, London, SW18



Second Floor



Ground Floor



First Floor

Total area (approx.): 116.2 sq. m (1,250.7 sq. ft)