



Gwendolen Avenue, SW15

£1,400,000

Dexters



Gwendolen Avenue, SW15

A very cool conversion flat with an astonishing 71 square metre (764 square foot) private, south-facing garden. The flat has three bedrooms and three bathrooms on the ground floor of one of the most interesting buildings in West Putney.

Bounty Hall was built in 1939 and served as a church for sixty years before it was converted to luxury apartments.

Gwendolen Avenue is a premier road in West Putney where the average house price is over £4,400,000. Putney Station is close by and there are plenty of buses along the Upper Richmond Road.

Features

- Converted Church
- Secure Parking
- Big Garden
- Three Bedrooms
- Three Bathrooms
- Ground Floor

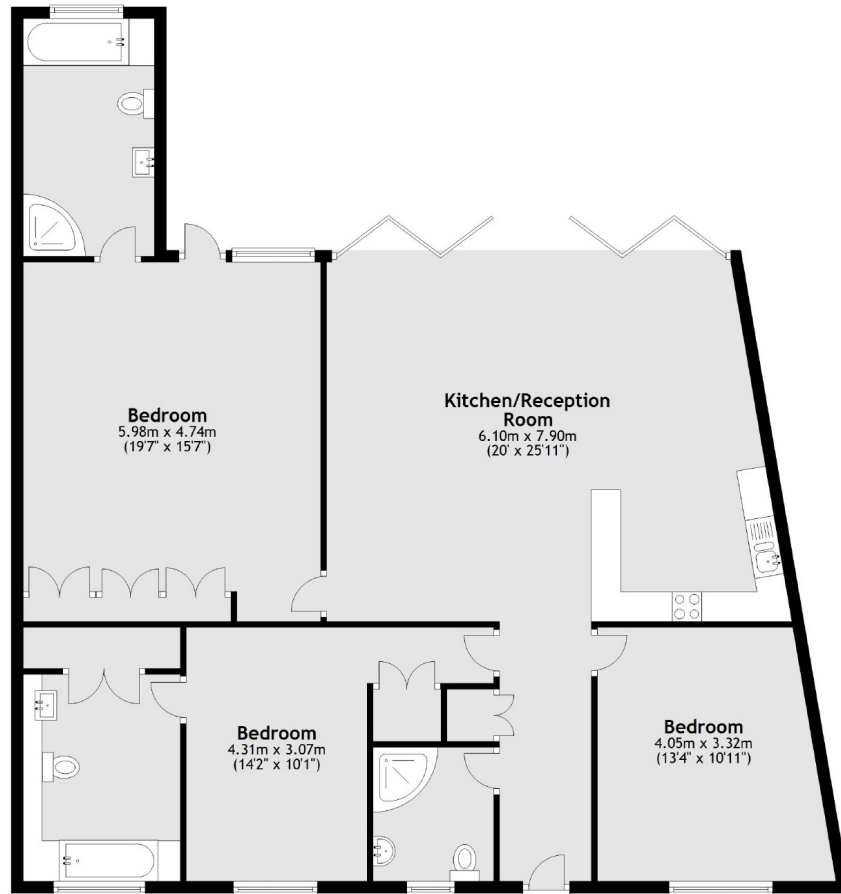






Gwendolen Avenue, London, SW15

Ground Floor



Total area: approx. 145.0 sq. metres (1560.3 sq. feet)