



## Kersfield Road, SW15

£1,095,000

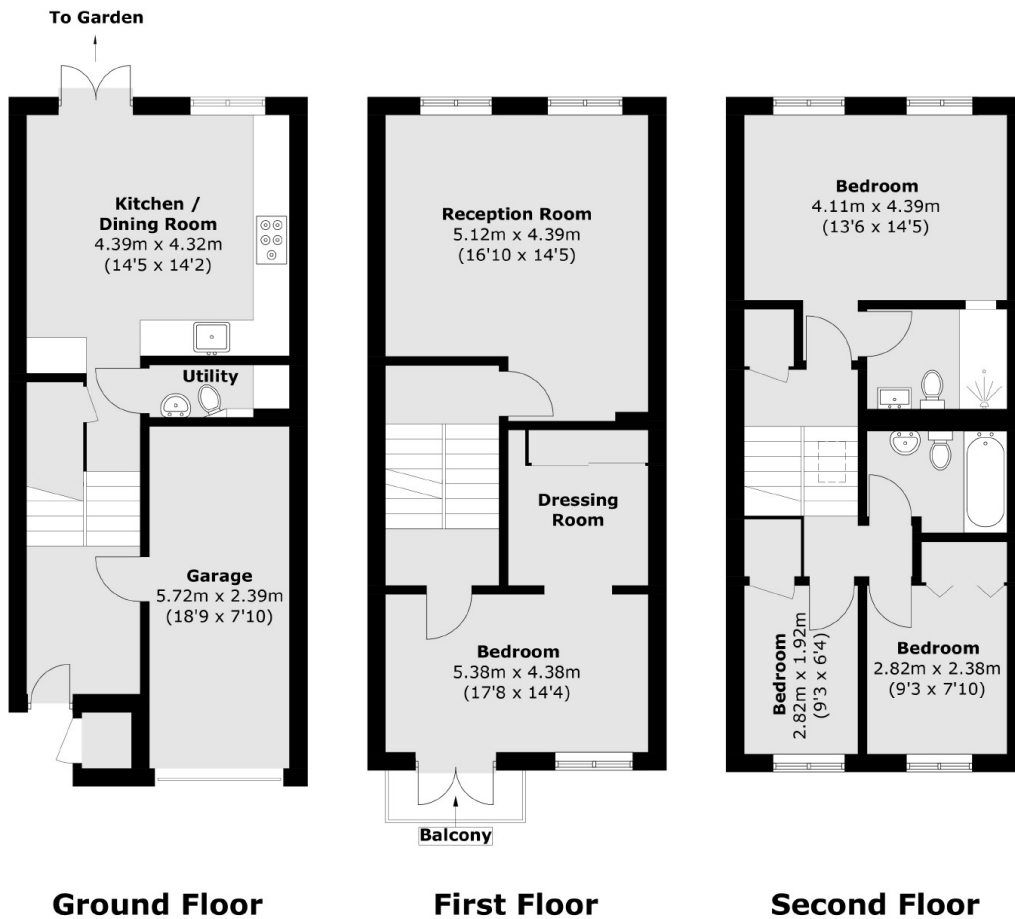
This mid-century, end of terrace town house is in super condition throughout following a renovation in 2016 that included a reconfigured layout and new windows. The house has off-street parking, a garage, a large garden, a utility room, four bedrooms and two bathrooms.

Kersfield Road is just off Putney Hill. This location gives excellent access to Putney mainline train station, the High Street and major bus routes. The A3 provides easy access to routes in and out of London.

### Features

- Town House
- Off-Street Parking
- Freehold
- Large Garden
- Four Bedrooms
- Two Bathrooms

# Kersfield Road, London, SW15



Total area (approx.): 139.6 sq. m (1,502.6 sq. ft) (Including Garage)  
External Cupboard (approx.): 0.8 sq. m (8.6 sq. ft)  
Balcony (approx.): 1.8 sq. m (19.3 sq. ft)