



Putney Bridge Road, SW15

£500,000

Dexters



Putney Bridge Road, SW15

This stylish conversion flat occupies the middle floor of a good looking Victorian building in a highly desirable location close to Wandsworth Park, Putney Bridge, Putney Station and East Putney. The flat has a share of the freehold, a modern shaker-style kitchen and period features.

Putney Bridge Road runs parallel to the river Thames alongside Wandsworth Park and connects to Putney High Street. East Putney underground (District Line), Putney mainline and the River Boat service are close by, as are numerous bus links.

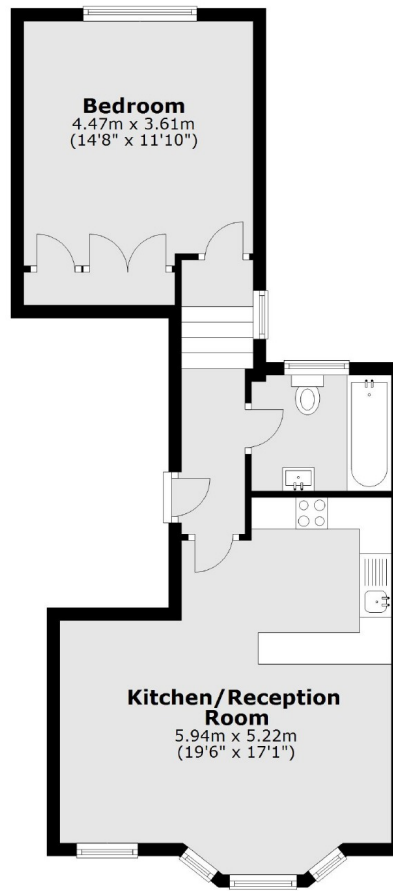
Features

- One Bedroom
- Period Conversion
- Share of Freehold
- Modern Kitchen
- Stylish Design
- Wonderful Location



Putney Bridge Road, London, SW15

First Floor



Total area: approx. 49.4 sq. metres (531.6 sq. feet)