



## Disraeli Road, SW15

£725,000

Situated within a delightful Victorian conversion in a prime location near Putney and East Putney stations, this garden flat offers a 999-year lease. Retaining its period charm with sash windows, the property has been enhanced with a contemporary kitchen and elegant design touches throughout. The south-facing garden is truly one of the finest in Putney.

Disraeli Road serves as a thoroughfare connecting Putney High Street to Putney Bridge Road. Nearby attractions include Wandsworth Park, the River Thames, Putney Rail Station, and East Putney District Line Station, all within close proximity.

### Features

- South Facing Garden
- Two Bedrooms
- Ground Floor
- 999 Year Lease
- Victorian Conversion
- Modern Kitchen



## Disraeli Road, SW15

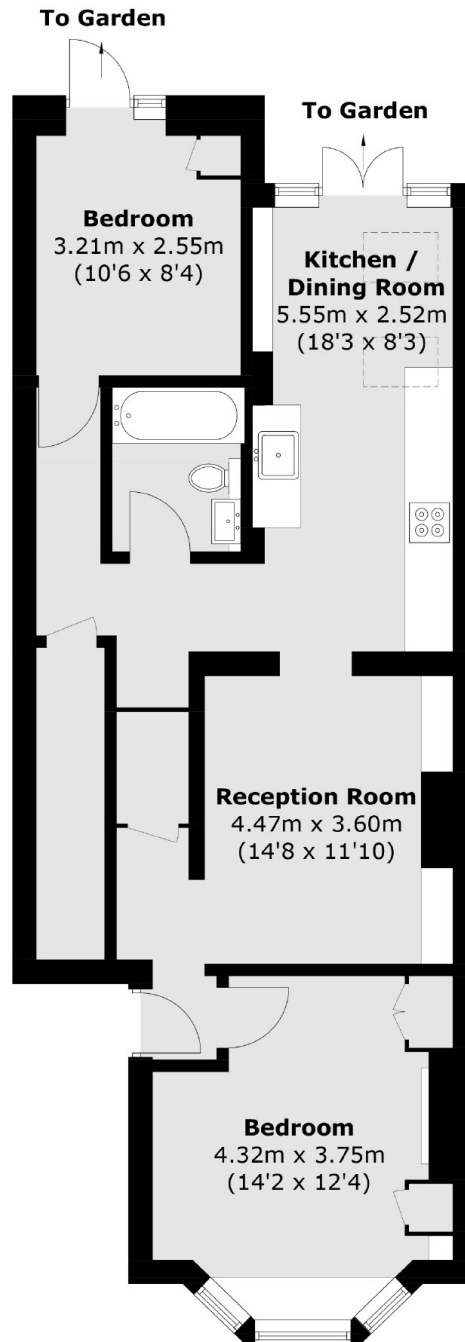
Nestled along the Thames in Southwest London, Putney offers a blend of suburban calm and urban energy. Its riverside charm, bustling High Street, and proximity to parks make it a sought-after locale. With excellent transport links and abundant recreational options, Putney provides an ideal mix of tranquility and convenience.







# Disraeli Road, London, SW15



Total area (approx.): 67.6 sq. m (727.6 sq. ft)