



Putney Hill, SW15

£750,000

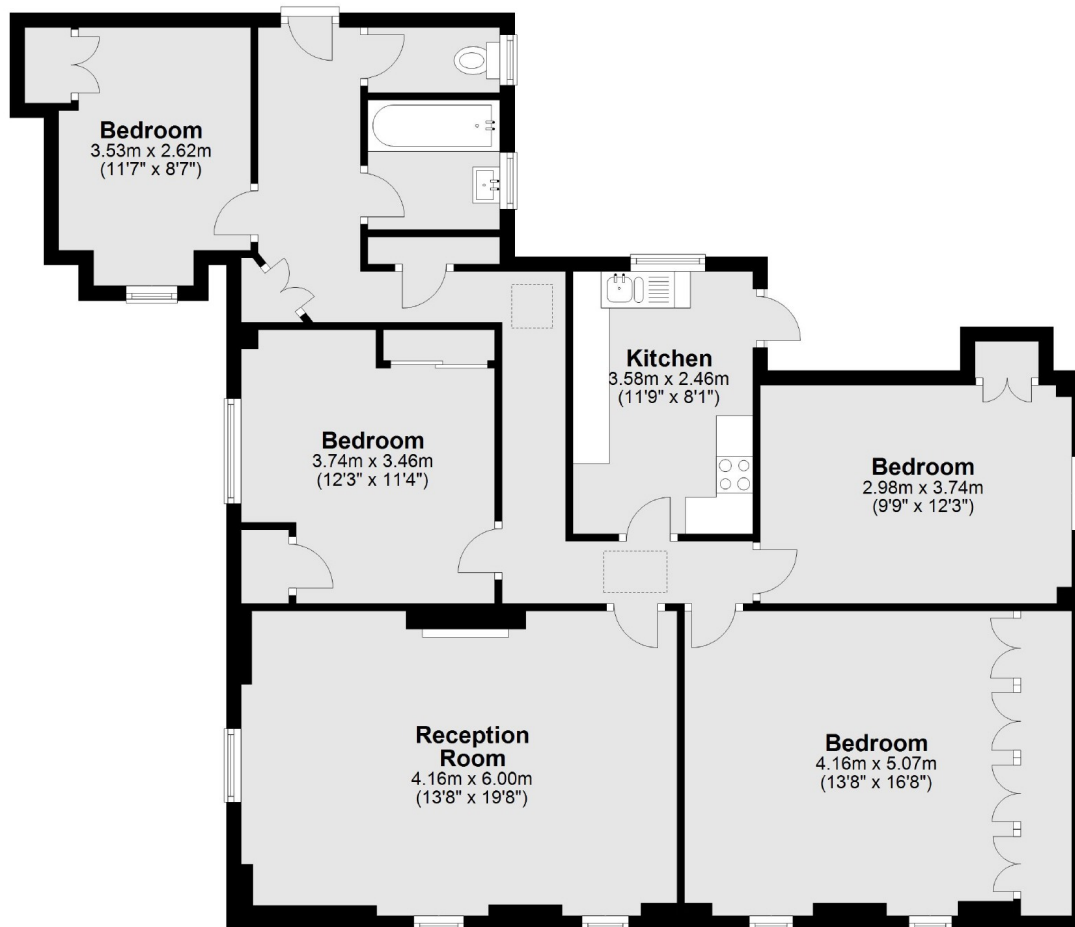
A big flat in Lower Park, a prestigious 1970s block of flats with perfectly maintained gardens. The flat has four bedrooms, a share of freehold and parking (first come first serve).

Lower Park is just up Putney Hill, a short distance from the High Street and Rail station. East Putney is close by and there are plenty of buses nearby.

Features

Four Bedrooms
Lift
Parking
Share Of Freehold
114sq.m / 1226sq.ft
Close To Putney

Putney Hill, London, SW15



Total area: approx. 113.9 sq. metres (1226.1 sq. feet)