



**Manor Fields, SW15**

£1,000,000

**Dexters**



## Manor Fields, SW15

A large purpose-built apartment in the ever popular Manor Fields, which is famous for having the third-biggest garden in London. The flat is on the ground floor, has a share of the freehold, a 999 year lease, a garage, four bedrooms and two reception rooms.

Manor Fields, on Putney Hill in south-west London, is a private estate of 228 spacious flats in fourteen houses created in the 1930s as homes of quiet refinement. It combines touches of Tudor and Jacobean architecture and influences of the arts and crafts movement. The twelve-acre estate contains the third-biggest private garden in London, offering peace and quiet amid lawns, woodland and an ornamental pond. The estate has a colourful history, including being on the site of the house where Thomas Cromwell, Henry VIII's chief minister, was born. It is a short walk from Putney Heath, Wimbledon Common and the thriving town centre of Putney with its shops, restaurants, pubs and cinema.

Manor Fields is off Putney Hill, just 0.4 miles from Putney High Street, Putney station (National Rail) and East Putney tube (District Line).

### Features

- Four Bedrooms
- Two Receptions
- Share Of Freehold
- Ground Floor
- Residents Parking
- Garage

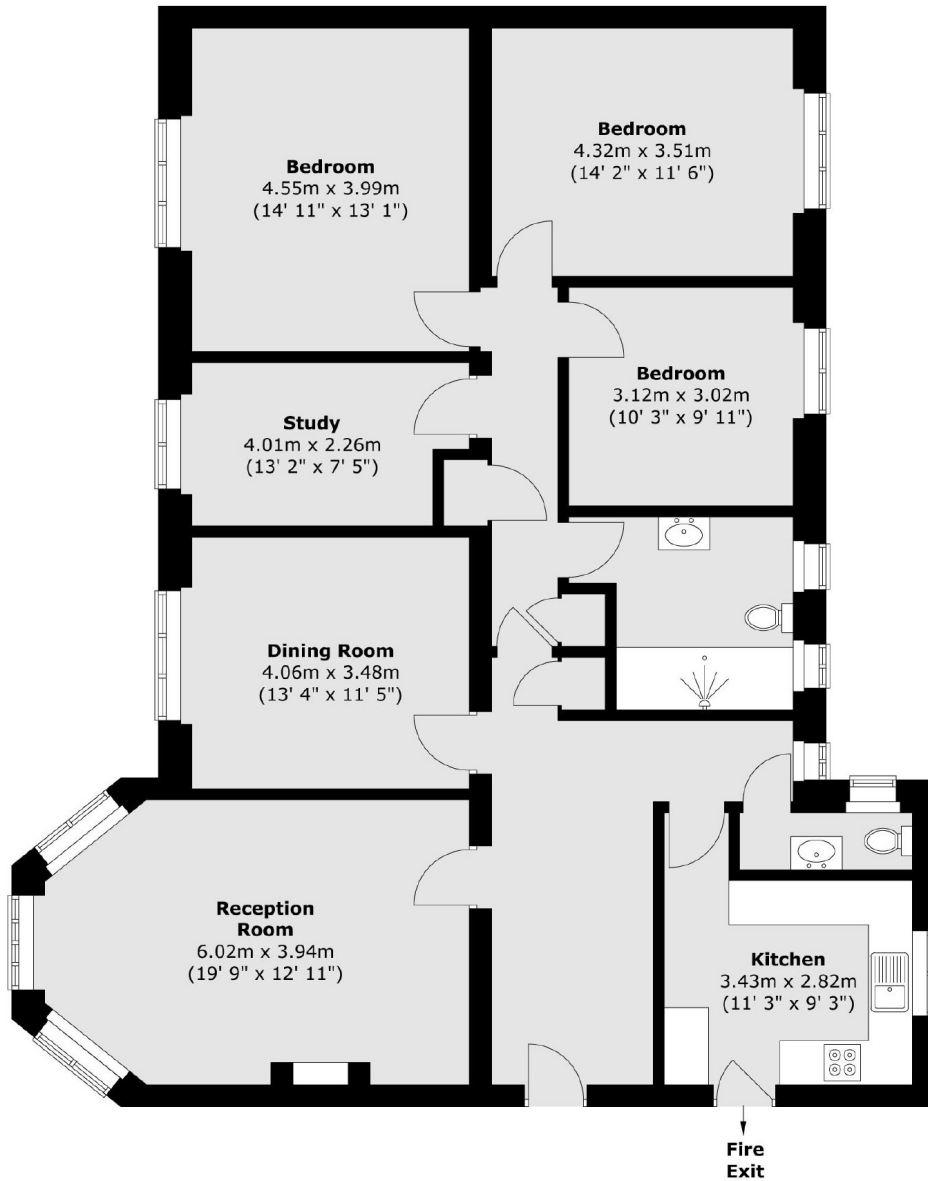








# Manor Fields, London, SW15



Total area (approx.) : 138.6 sq. m (1492 sq. ft)