



## Putney Hill, SW15

### £1,000,000

A large modernised three bedroom flat located in a sought after mansion block on Putney Hill. The property has been refurbished throughout with high specification bathrooms, kitchen, a spacious double reception room, a feature fireplace and an additional storage room in the basement.

Ross Court is close to Putney, Wimbledon Common and Wimbledon Village. The train station is about 1.2km away, as is the underground station.

### Features

- High Specifications
- Turn Key
- Share Of Freehold
- Gated Development
- Basement Storage Unit
- Chain Free

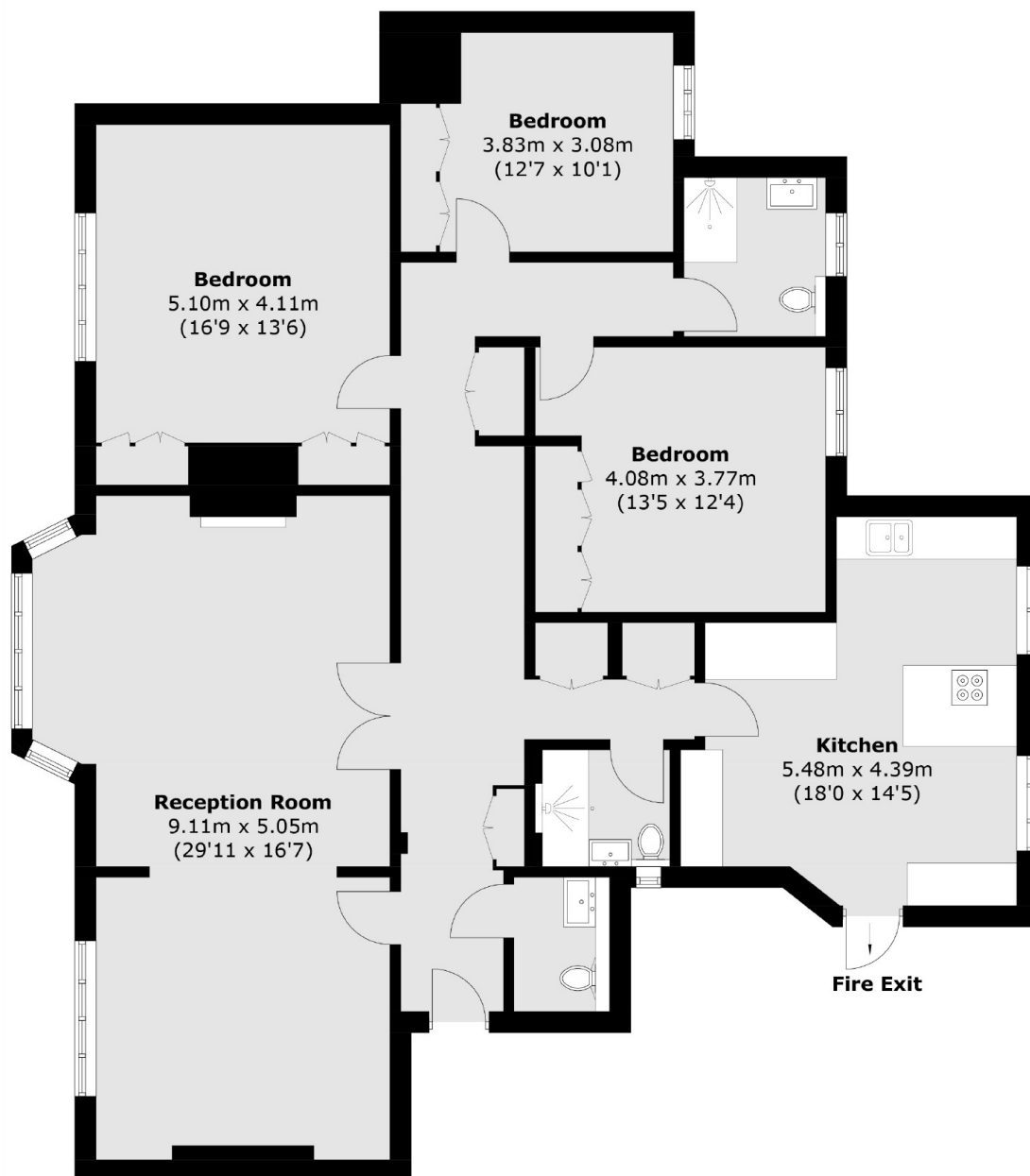


## Putney Hill, SW15

Situated on the first floor overlooking the communal gardens the flat has great potential and a generous square footage. The property also benefits from separate storage and off-street parking.



# Putney Hill, London, SW15



Total area (approx.): 153.0 sq. m (1,646.9 sq. ft)