



Holroyd Road, SW15

£500,000

Dexters



Holroyd Road, SW15

Situated within a semi-detached Edwardian house on a prestigious street in West Putney, this top-floor apartment boasts one bedroom, a generous lease, and a host of recent upgrades, including new flooring, kitchen, and bathroom. With the added benefit of a private garden, it presents an ideal opportunity for a first-time buyer.

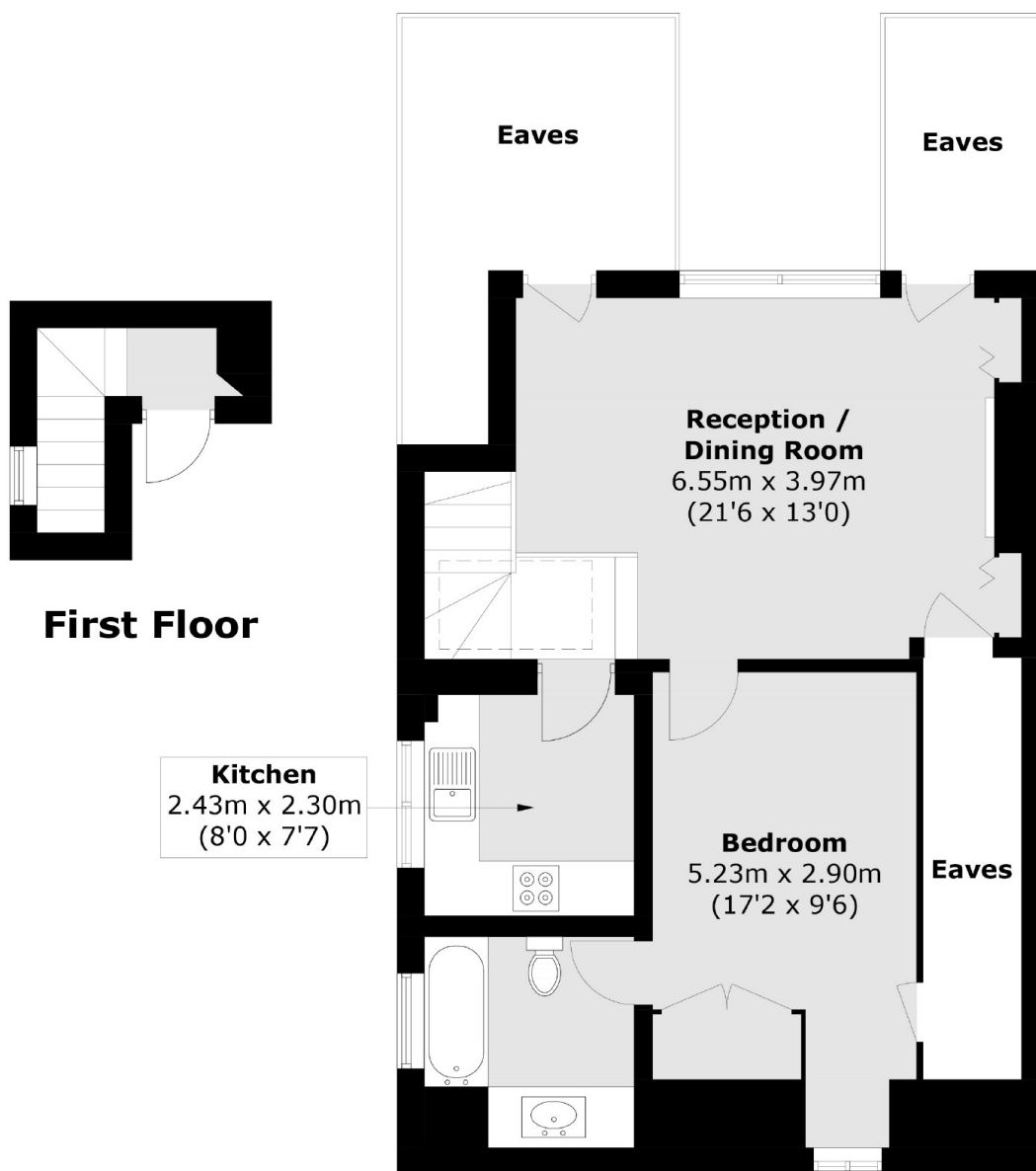
Holroyd Road, nestled between Hazlewell Road and Howards Lane in Upper West Putney, enjoys a setting amidst impressive architectural surroundings. Its proximity to Putney High Street and Rail Station adds convenience and accessibility to this already desirable location.

Features

- Top Floor
- One Bedroom
- Private Garden
- Long Lease
- New Kitchen
- New Bathroom



Holroyd Road, London, SW15



First Floor

Kitchen
2.43m x 2.30m
(8'0 x 7'7)

**Reception /
Dining Room**
6.55m x 3.97m
(21'6 x 13'0)

Bedroom
5.23m x 2.90m
(17'2 x 9'6)

Total area (approx.): 54.1 sq. m (582.4 sq. ft)
(Excluding Eaves)