



Emerald Square, SW15

£4,312 Per calendar month

A spacious and well presented four bedroom townhouse, that is situated within the sought after Emerald Square development. The property further benefits from a large rear garden and allocated parking.

Located off Roehampton Lane, Emerald Square is close to the shops and amenities of both Putney and Barnes, and within close proximity of several primary and secondary schools. The closest station is Barnes (0.9m), which provides excellent transport links into Central London.

Features

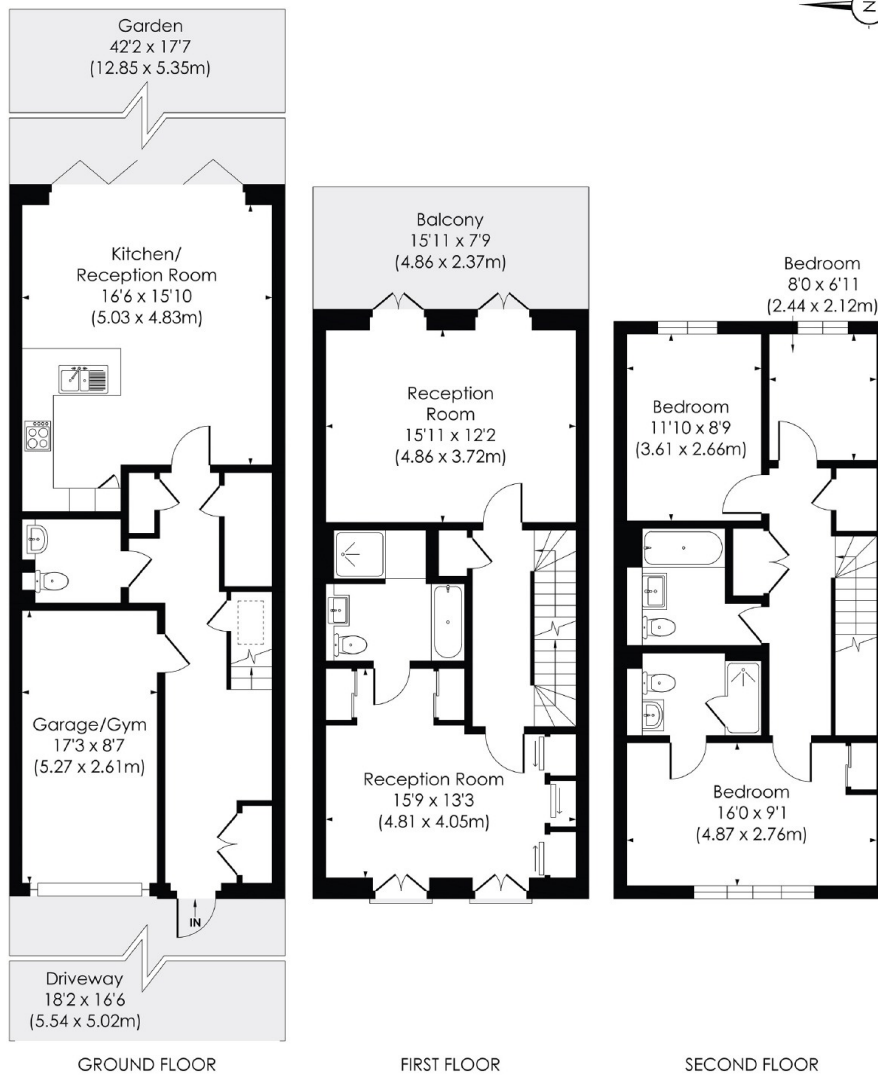
- Four Bedrooms
- Furnished
- Modern
- Parking
- Garage
- Private Garden

Emerald Square, London, SW15

EMERALD SQUARE, SW15

Approx. Gross Internal Floor Area

1804 Sq. ft/167.60 Sq. m
Including Garage



© Pixangle Property Marketing Ltd. info @pixangle.com Tel: 0208 870 2118

pixangle
PROPERTY MARKETING

This floor plan has been prepared for illustration purposes only, in accordance with the latest RICS code of measuring and is not to scale. All measurements and areas are approximate and whilst every effort has been made to ensure the accuracy of the plan contained here, no responsibility is taken for any error, omission or misstatement.

Dexters

Putney
176 Putney High Street
London
SW15 1RS

Lettings
020 8789 9090

Energy Rating: B. We aim to make our particulars both accurate and reliable. However they are not guaranteed; nor do they form part of an offer or contract. If you require clarification on any points then please contact us, especially if you're traveling some distance to view. Please note that appliances and heating systems have not been tested and therefore no warranties can be given as to their good working order.



dexters.co.uk