



Roehampton Lane, SW15

£425,000

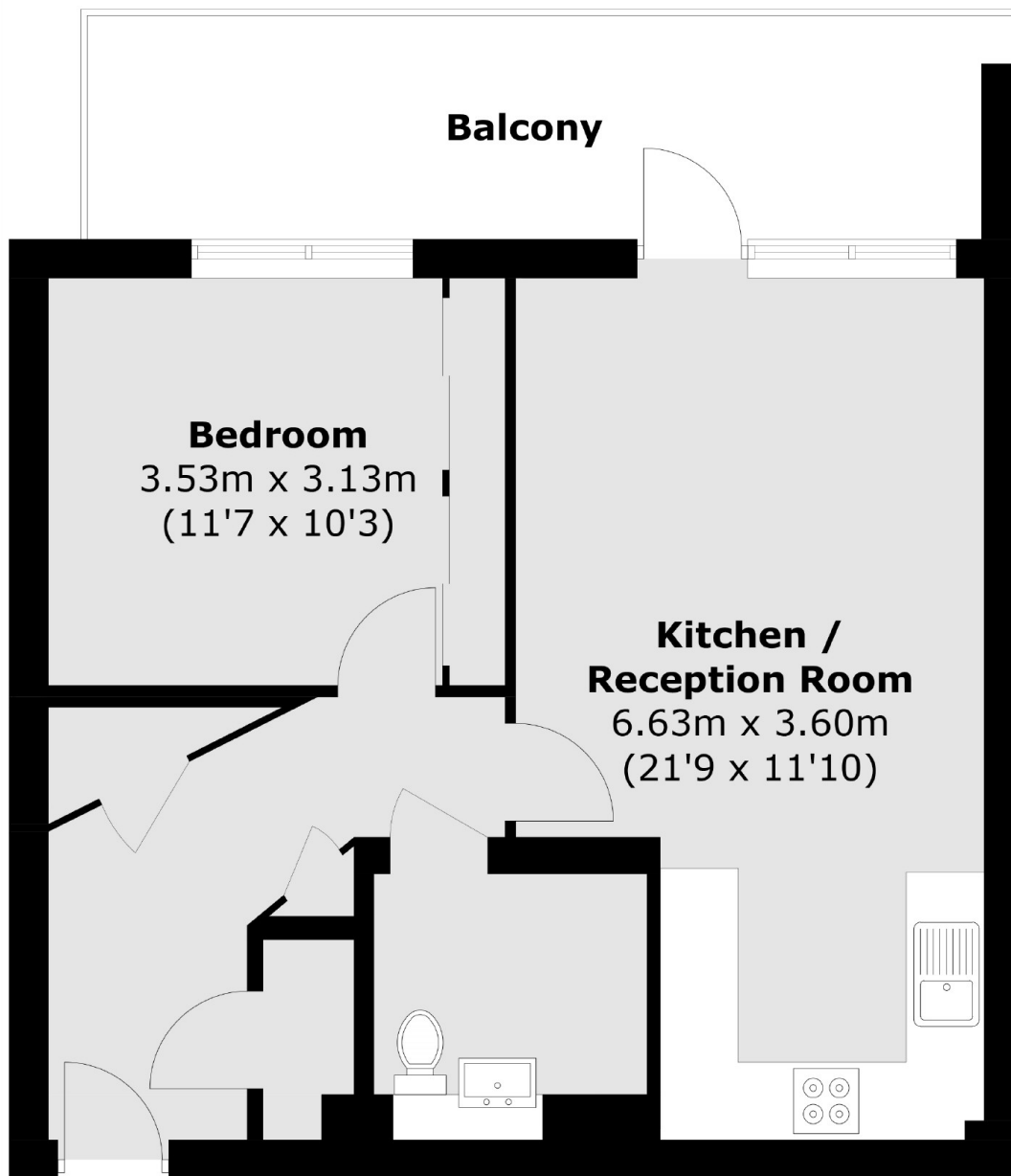
Built in 2013 by St James (part of the Berkeley Group) this one bedroom apartment has had one owner from new, has a 999 year lease, secure underground parking and a large balcony.

Barnes Station lies nearby, offering regular train services to Vauxhall and Waterloo. Within a short distance, you'll find Richmond Park, Barnes Common, and Putney Heath.

Features

- Modern Flat
- One Bedroom
- Secure Parking
- Lift
- Balcony
- 999 Year Lease

Roehampton Lane, London, SW15



First Floor

Total area (approx.): 47.9 sq. m (515.6 sq. ft)
Balcony (approx.): 12.4 sq. m (133.5 sq. ft)