



Clockhouse Place, SW15

£565,000

A first floor flat with two bedrooms, two bathrooms and allocated parking in a prestigious gated development. The property is a short distance away from East Putney Station. Clockhouse Place was built around 1996 by John Laing Homes, who are renowned for the quality of their developments.

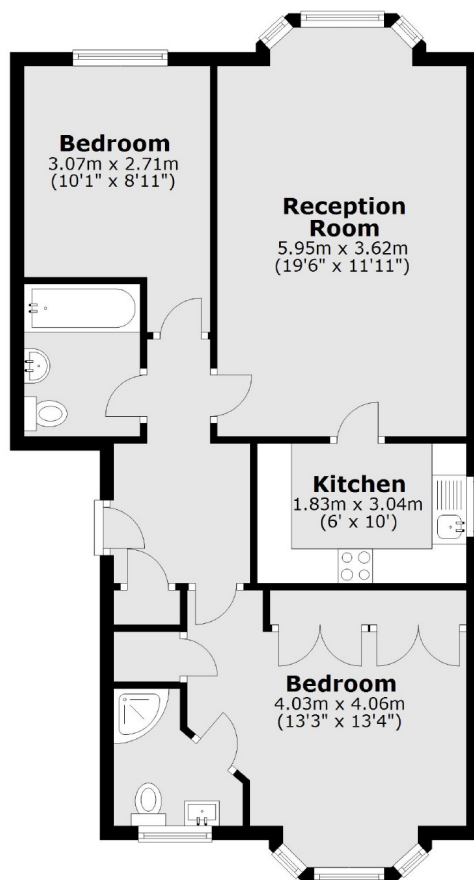
Clockhouse Place is a private development just off Lytton Grove. East Putney Station is very close and Putney Rail Station is just a short distance. Local green spaces include Wandsworth Park, Putney Heath and Wimbledon Common.

Features

- Two Bedrooms
- Two Bathrooms
- Parking
- Long Lease
- Excellent Location
- Gated Development

Clockhouse Place, London, SW15

First Floor



Total area: approx. 65.8 sq. metres (707.9 sq. feet)