



## Upper Richmond Road, SW15

£2,500 Per calendar month

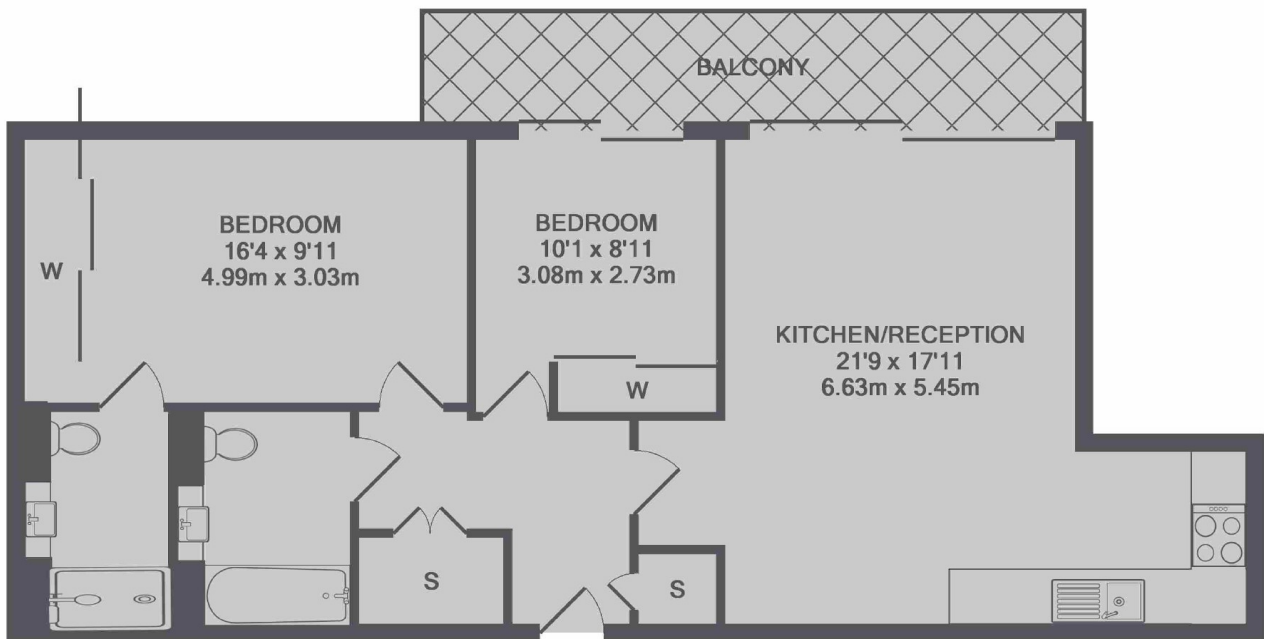
This two bedroom modern apartment has two bathrooms one en-suite, a spacious open plan living area with a fitted kitchen and all appliances, a private balcony and concierge.

With Putney high street close by which has a wide selection of bars and restaurants available, Tileman House is perfectly located and offers excellent transport options.

### Features

- Modern Development
- Two Bedrooms
- Two Bathrooms
- Open Plan
- Modern Kitchen
- Concierge

# Upper Richmond Road, London, SW15



TOTAL APPROX. FLOOR AREA 735 SQ.FT. (68.2 SQ.M.)