



Upper Richmond Road, SW15

£500,000

Dexters



Upper Richmond Road, SW15

This conversion flat is on the ground floor of a grand Victorian villa. It has two bedrooms, a share of freehold, an allocated parking space and leads to a private south facing patio. There is no chain.

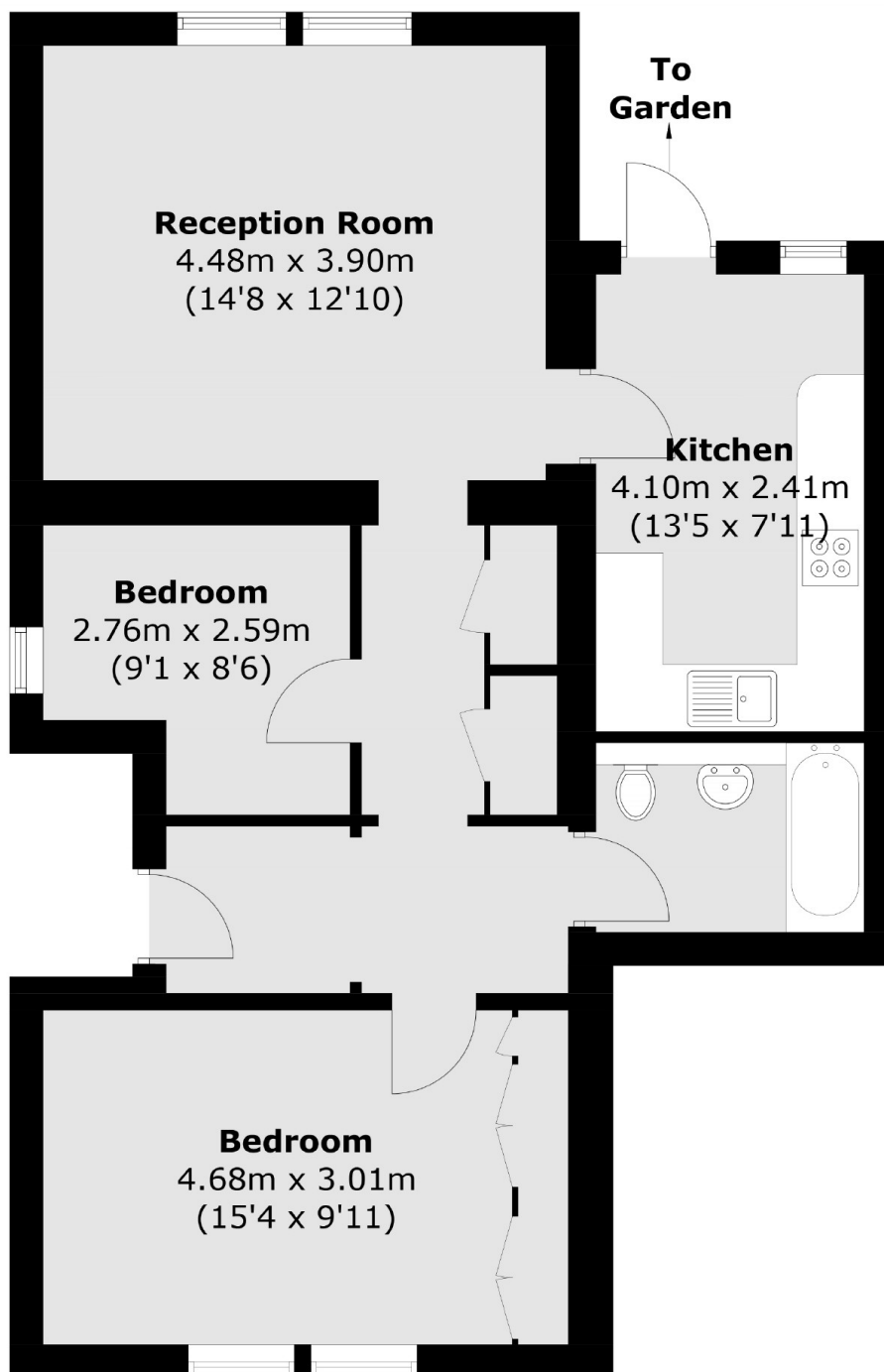
315 Upper Richmond Road is close to Putney High Street and East Putney Station (District Line). There are several buses that stop close by.

Features

- Two Bedrooms
- Ground Floor
- Patio Garden
- Share of Freehold
- Parking
- Modern Kitchen



Upper Richmond Road, London, SW15



Total area (approx.): 67.4 sq. m (725.4 sq. ft)