



**Upper Richmond Road, SW15**

**£600,000**

**Dexters**



## Upper Richmond Road, SW15

This conversion flat is on the ground floor of a grand Victorian villa. It has two bedrooms, a share of freehold, parking and a private patio.

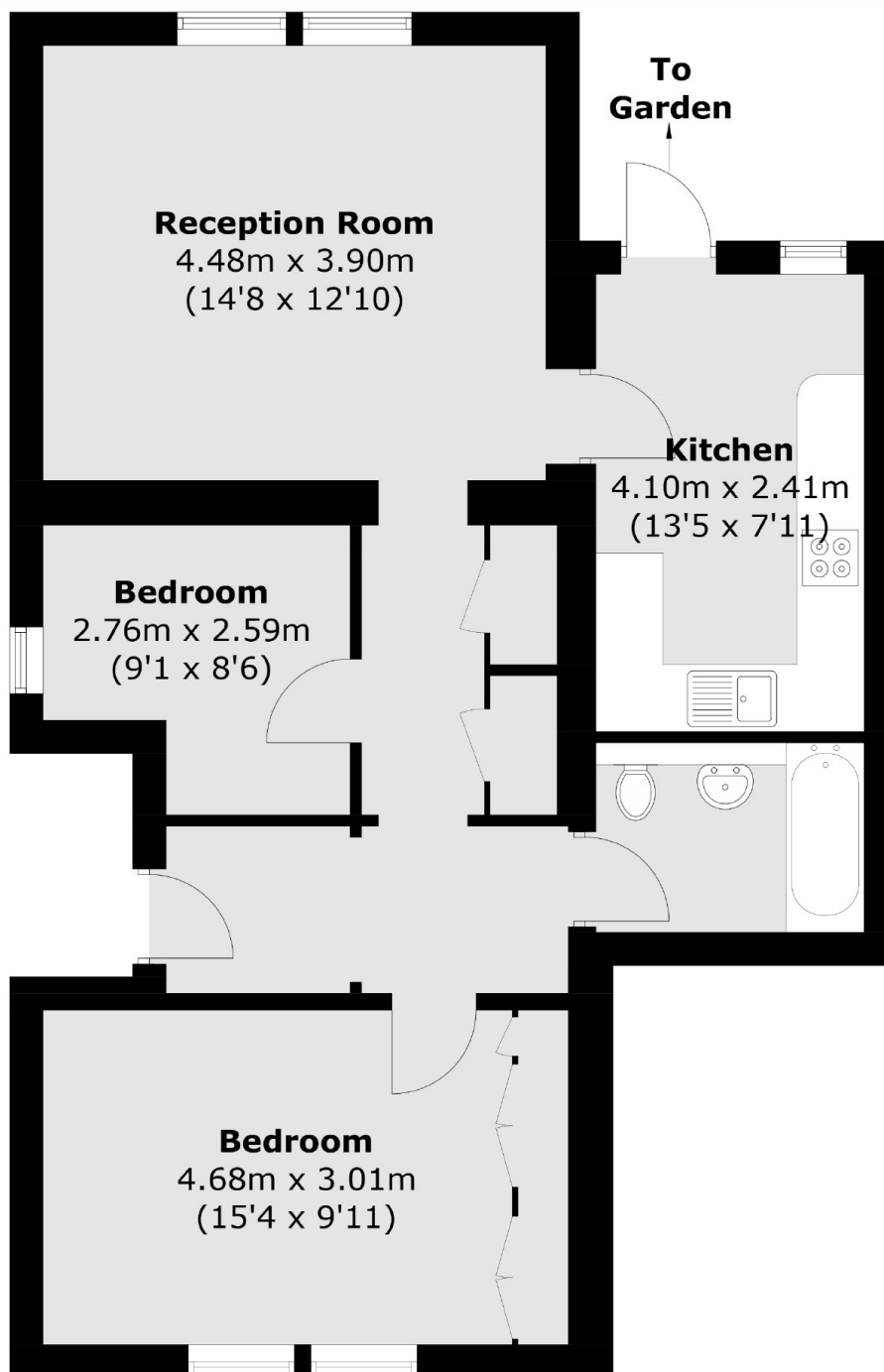
315 Upper Richmond Road is close to Putney High Street and East Putney Station (District Line). There are several buses that stop close by.

### Features

- Two Bedrooms
- Ground Floor
- Patio Garden
- Share of Freehold
- Parking
- Modern Kitchen



# Upper Richmond Road, London, SW15



Total area (approx.): 67.4 sq. m (725.4 sq. ft)