



Ringford Road, SW18

£545,000

A modern and spacious Victorian conversion flat with a recently extended lease, a private garden, a new bathroom, and a large open plan kitchen. The flat benefits from a sole private entrance, and is the ideal property for a first-time buyer.

Ringford Road is a quiet, highly sought after road between East Putney, Wandsworth Town and Southfields. There are plenty of great options for transport into central London or out of London via the A3. Wandsworth Park and King George's park are a short distance away.

Features

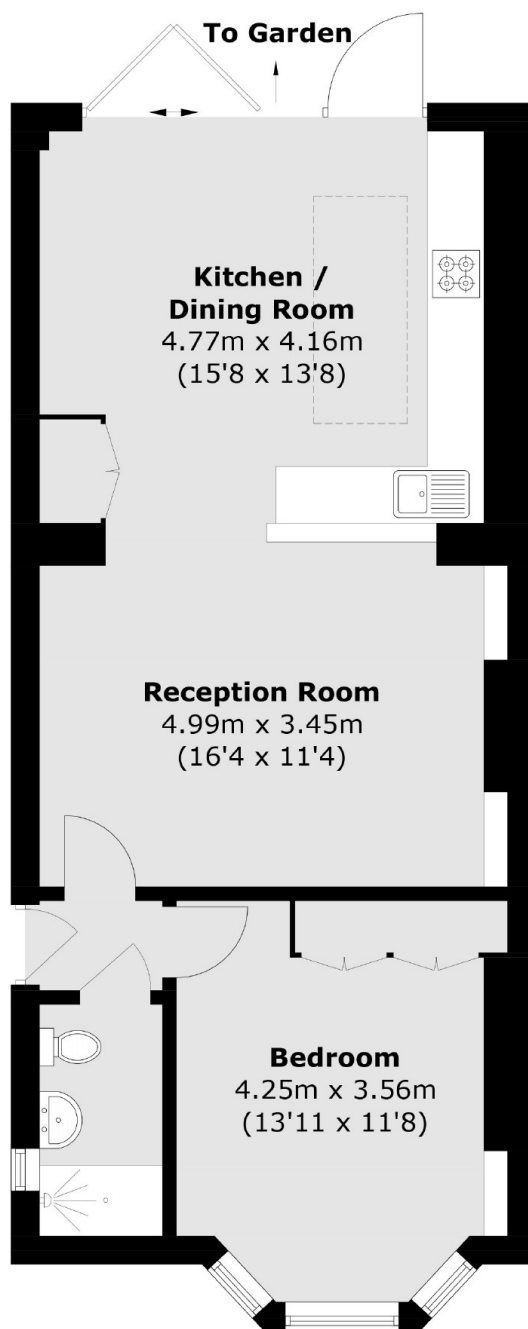
- Private Garden
- Victorian Conversion
- Stylish Design
- Period Features
- One Bedroom
- 169 Year Lease



Ringford Road, SW18



Ringford Road, London, SW18



Total area (approx.): 58.9 sq. m (634.0 sq. ft)

Dexters

Putney
176 Putney High Street
London
SW15 1RS
Sales
020 8789 9999

Energy Rating: TBC. We aim to make our particulars both accurate and reliable. However they are not guaranteed; nor do they form part of an offer or contract. If you require clarification on any points then please contact us, especially if you're traveling some distance to view. Please note that appliances and heating systems have not been tested and therefore no warranties can be given as to their good working order.

 **RICS** | Regulated
Estate Agent
and Letting Agent

dexters.co.uk