



Putney Heath, SW15

£625,000

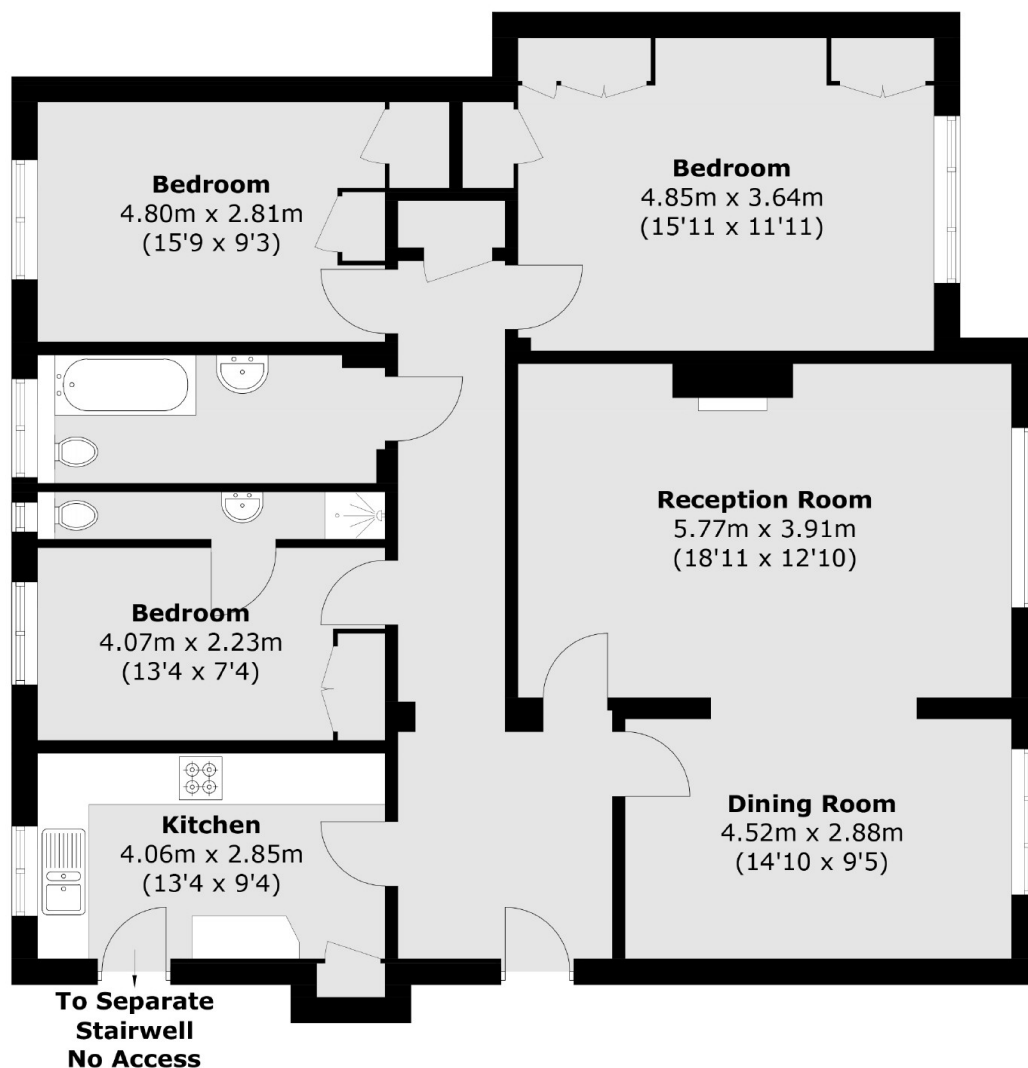
A three bedroom apartment for sale in Exeter House, a prestigious mansion block close to Putney Heath. On the second floor (with a lift), the flat is a bit dated but has been looked after and is ready for a new owner.

Exeter House is close to Putney Heath with frequent buses to Putney station. The grounds are beautifully kept with communal tennis courts and a barbeque area. Putney Heath is a green and leafy part of Putney, perfect for a stroll on the heath and within easy reach of Putney High Street, mainline and tube stations.

Features

- Three Bedrooms
- Two Bathrooms
- Tennis Courts
- Porter
- Share of Freehold
- Mansion Block

Putney Heath, London, SW15



Total area (approx.): 115.0 sq. m (1,237.9 sq. ft)