



Greenstead Gardens, SW15

£900,000

Dexters



Greenstead Gardens, SW15

This semi-detached 1920s house has three bedrooms, a loft room, a fantastic South facing garden, with bifold doors and open plan living. There is a separate outhouse with two bedrooms, double glazing throughout, two bathrooms, a modern kitchen and a double reception room.

Greenstead Gardens is part of the Dover House Estate which was created in the 1920s for the benefit of soldiers returning from WW1. The 430 bus (to South Kensington via Putney, Fulham & West Brompton) stops nearby. Barnes station is 1 Mile away.

Features

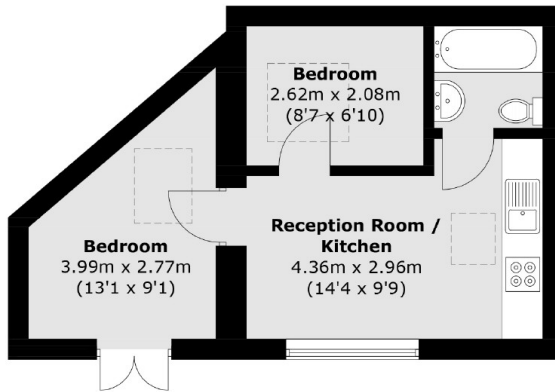
- Freehold
- Semi Detached
- 1920s House
- South Facing Garden
- Open plan living
- Byfold doors



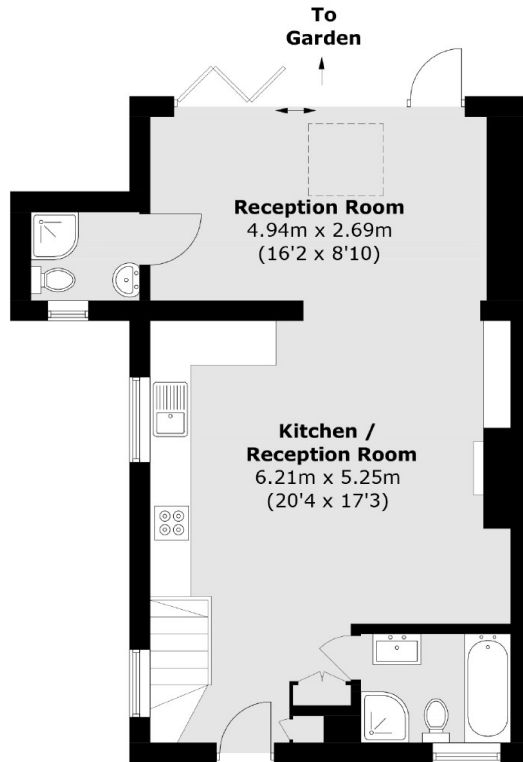




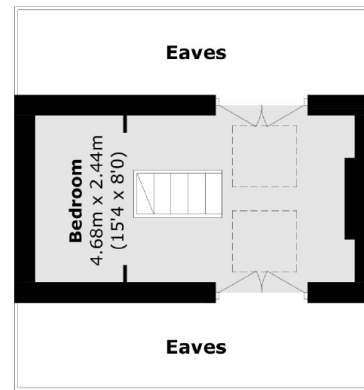
Greenstead Gardens, London, SW15



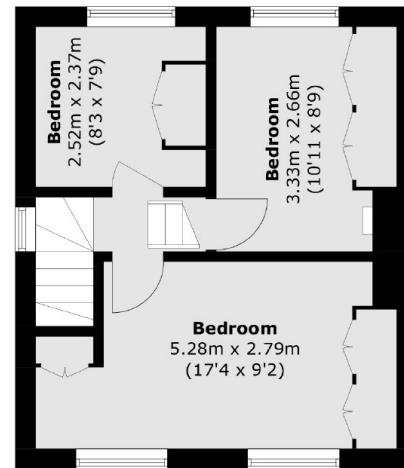
Annex - Ground Floor
(Not Shown In Actual Location / Orientation)



Ground Floor



Second Floor



First Floor

Total area (approx.): 95.5 sq. m (1,027.8 sq. ft)
Annex: 29.7 sq. m (320.0 sq. ft)
(Excluding Eaves)