



Scott Avenue, SW15

£550,000

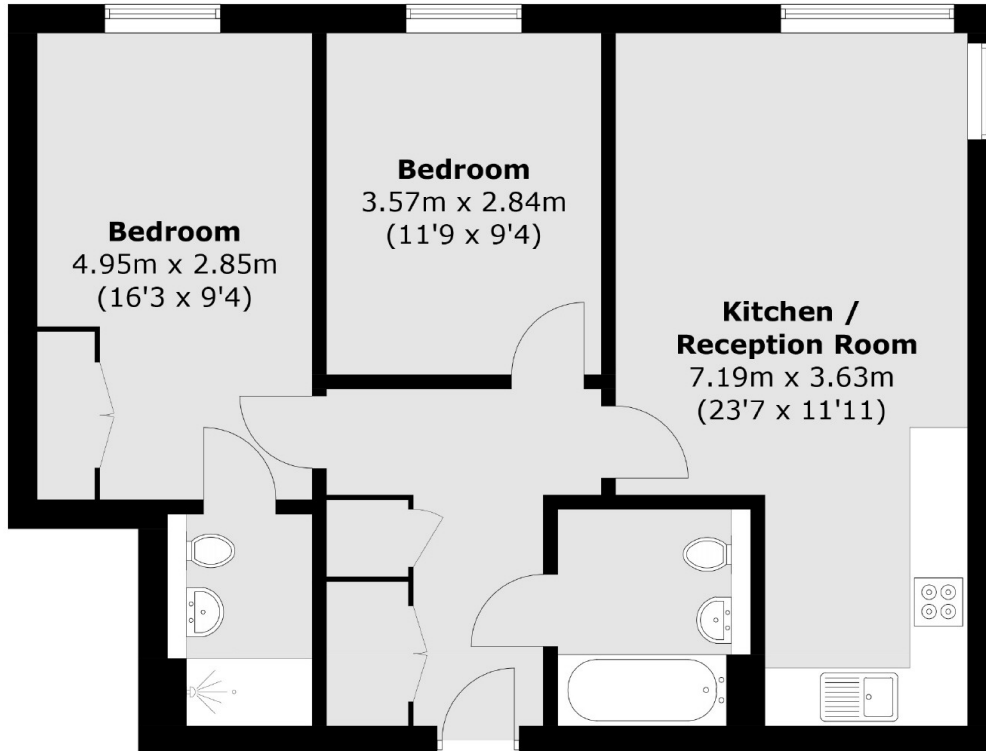
This two bedroom, two bathroom flat was built by Crest Nicholson in 2007 and part of a prestigious residential development close to East Putney and Southfields tube stations and Putney mainline station. The flat has a 999 year lease, secure underground parking, and access to a private residents-only gym and library.

Repton House is within a 10 minute walk of both East Putney and Southfields. There are well-kept communal gardens surrounding the building and Wimbledon Park, Wimbledon Common and Wandsworth Park are all close by.

Features

- Modern Flat
- Two Bedrooms
- Two Bathrooms
- 999 Year Lease
- Parking
- Gym & Library

Scott Avenue, London, SW15



Total area (approx.): 66.4 sq. m (714.7 sq. ft)