



Lower Richmond Road, SW15

£3,300 Per calendar month

Dexters



Lower Richmond Road, SW15

This spacious and well appointed two storey, three bedroom maisonette garden flat situated in a desirable location. The property further benefits from eat in kitchen two bathrooms and a private rear garden.

The property features ample living space spread across two floors. The ground floor comprises a welcoming entrance hall leading to a bright and airy living room, a contemporary kitchen equipped with modern appliances, and a convenient WC. Upstairs, there are three generously sized bedrooms offering comfortable accommodation, along with a family bathroom. Additionally, the property benefits from a private garden, providing a tranquil outdoor space perfect for relaxation or entertaining guests. With its prime location and modern amenities, this maisonette garden flat offers a comfortable and stylish living environment.

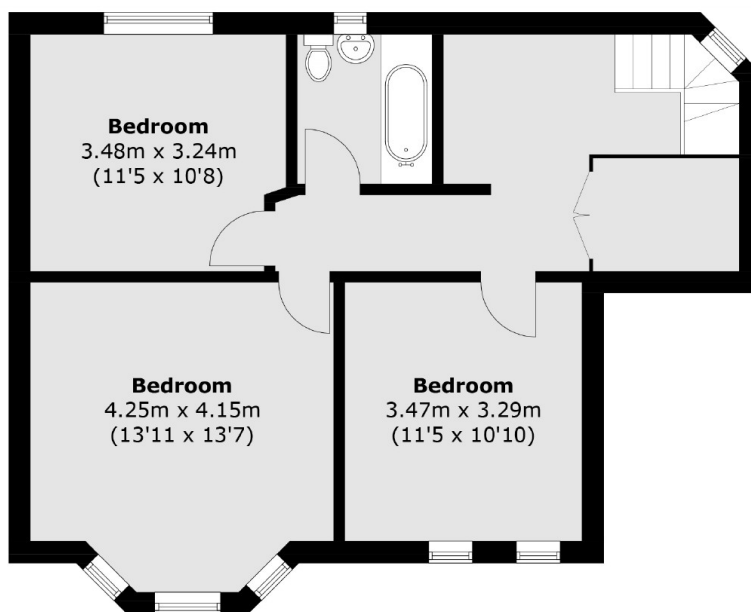
Lower Richmond road is a highly sought-after location, moments from independent shops and bars, offering excellent transport links. This stunning property is situated close to the River Thames.

Features

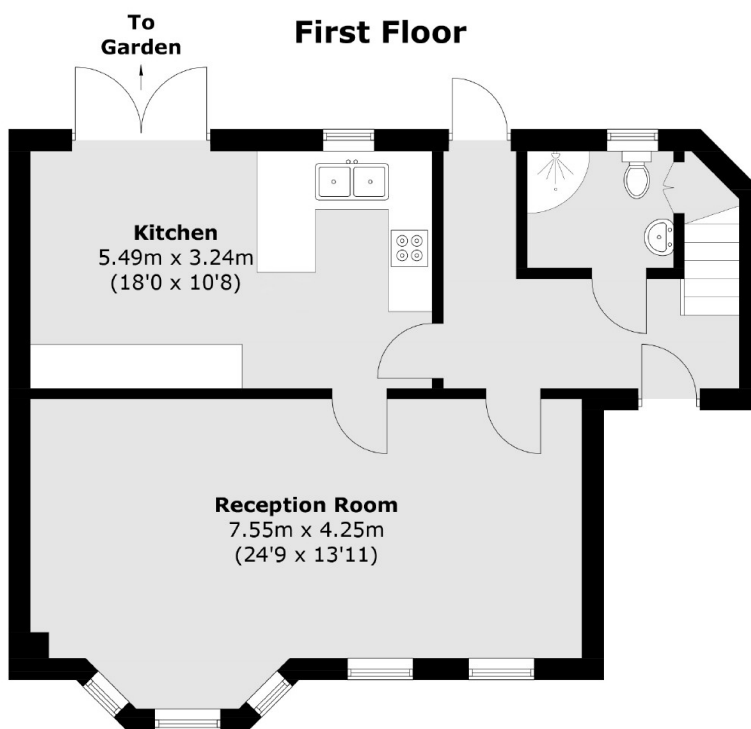
- Split Level Maisonette
- Spacious Reception
- Three Double Bedroom
- Eat In Kitchen
- Tiled Bathroom Suite
- Private Rear Garden



Lower Richmond Road, London, SW15



First Floor



Ground Floor

Total area (approx.): 121.9 sq. m (1,312.1 sq. ft)