

Eastfields Avenue, SW18

£725,000

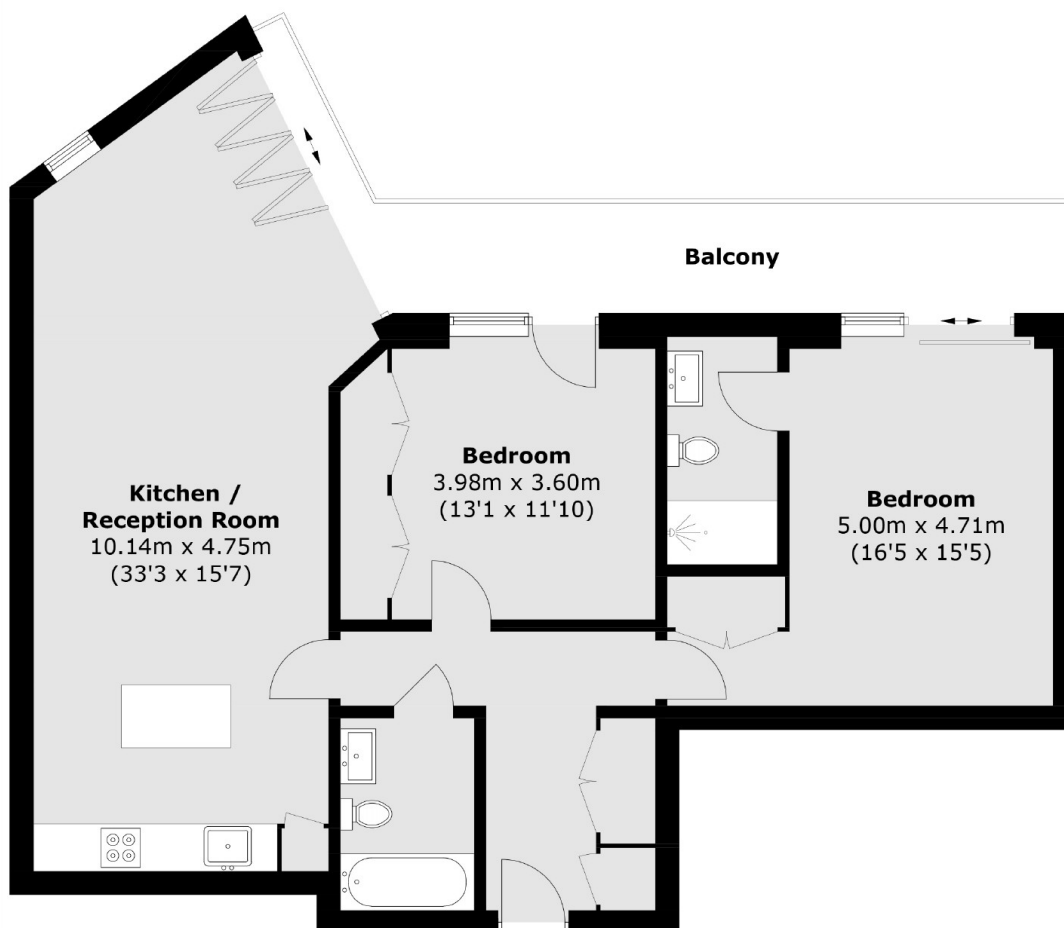
This riverside two bedroom apartment in Eastfields Avenue is on the second floor with views over gardens to the river. Residents have a concierge, a gym and swimming pool and communal gardens.

The flat is in Wandsworth Borough so benefits from low tax. The nearest rail station is Wandsworth Town although Putney is also close by. East Putney tube station for the district line is not far. The development also hosts a variety shops for convenience such as a grocery store, a coffee shop etc. Wandsworth Park is just around the corner. There is also an excellent nursery, some nice pubs/bars, good restaurants, a pilates studio and more. The River Bus (RB6) stops at Wandsworth Riverside Quarter and is a great way to travel in the City.

Features

- Two Double Bedrooms
- 970+ Year Lease
- Parking
- Two Bathrooms
- Concierge
- Gym and Swimming Pool

Eastfields Avenue, London, SW18



Total area (approx.): 90.7 sq. m (976.3 sq. ft)
Balcony: 13.6 sq. m (146.4 sq. ft)

Dexters

Putney
176 Putney High Street
London
SW15 1RS
Sales
020 8789 9999

Energy Rating: E. We aim to make our particulars both accurate and reliable. However they are not guaranteed; nor do they form part of an offer or contract. If you require clarification on any points then please contact us, especially if you're traveling some distance to view. Please note that appliances and heating systems have not been tested and therefore no warranties can be given as to their good working order.

 **RICS** | Regulated
Estate Agent
and Letting Agent

dexters.co.uk