



## Drapers Yard, SW18

£725,000

This modern flat was built in 2018 by leading global developer Greenland and has a 999 year lease and secure underground parking. The flat has floor-to-ceiling windows, zoned underfloor heating, two large bedrooms, a bathroom and an open-plan handleless kitchen with a quartz worktop and island.

The flat is close to Wandsworth Town Station (Rail) and Wandsworth Riverside Quarter Pier (Riverboat). See the developemnt website for more information: <https://ramquarter.com/local-area/>

2021 Winner of British Homes Awards: "Best Mixed-Use Development Of The Year".

### Features

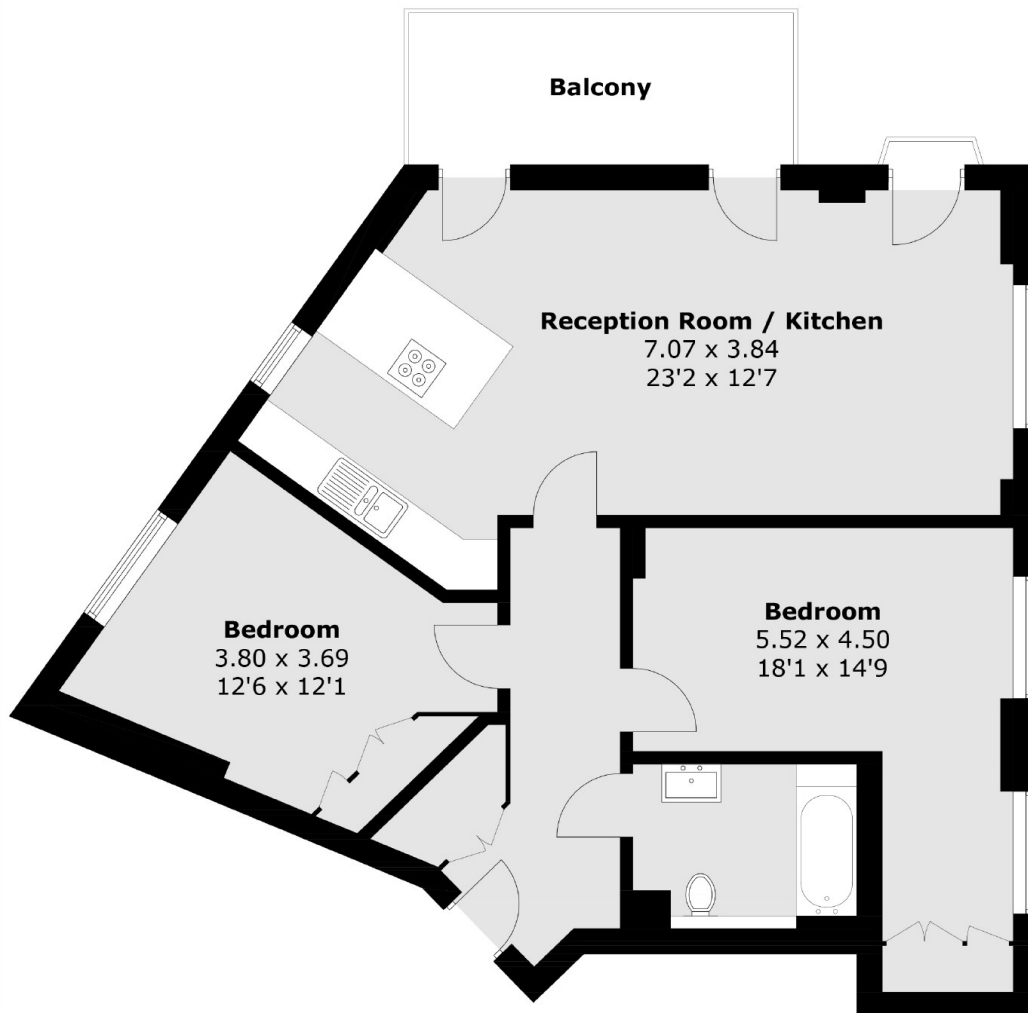
- Modern Flat
- Two Bedrooms
- 999 Year Lease
- Parking
- Underfloor Heating
- Balcony



**Drapers Yard, SW18**



# Drapers Yard, London, SW18



Total area (approx.): 80.4 sq. m (865.4 sq. ft)  
Balcony area (approx.): 8.2 sq. m (88.3 sq. ft)

**Dexters**

Putney  
176 Putney High Street  
London  
SW15 1RS  
Sales  
020 8789 9999

Energy Rating: B. We aim to make our particulars both accurate and reliable. However they are not guaranteed; nor do they form part of an offer or contract. If you require clarification on any points then please contact us, especially if you're traveling some distance to view. Please note that appliances and heating systems have not been tested and therefore no warranties can be given as to their good working order.

 **RICS** | Regulated  
Estate Agent  
and Letting Agent

[dexters.co.uk](http://dexters.co.uk)