



Knaresborough Drive, SW18

£525,000

Dexters



Knaresborough Drive, SW18

This really large and modern one bedroom flat has two balconies, a 250 year lease, secure underground parking and a large communal roof terrace.

George View House was built by Taylor Wimpey in 2015 in a lovely spot between Earlsfield, Wandsworth and Southfields. The development is about 400 metres from Earlsfield Rail Station or 900 metres from Southfields Station.

Features

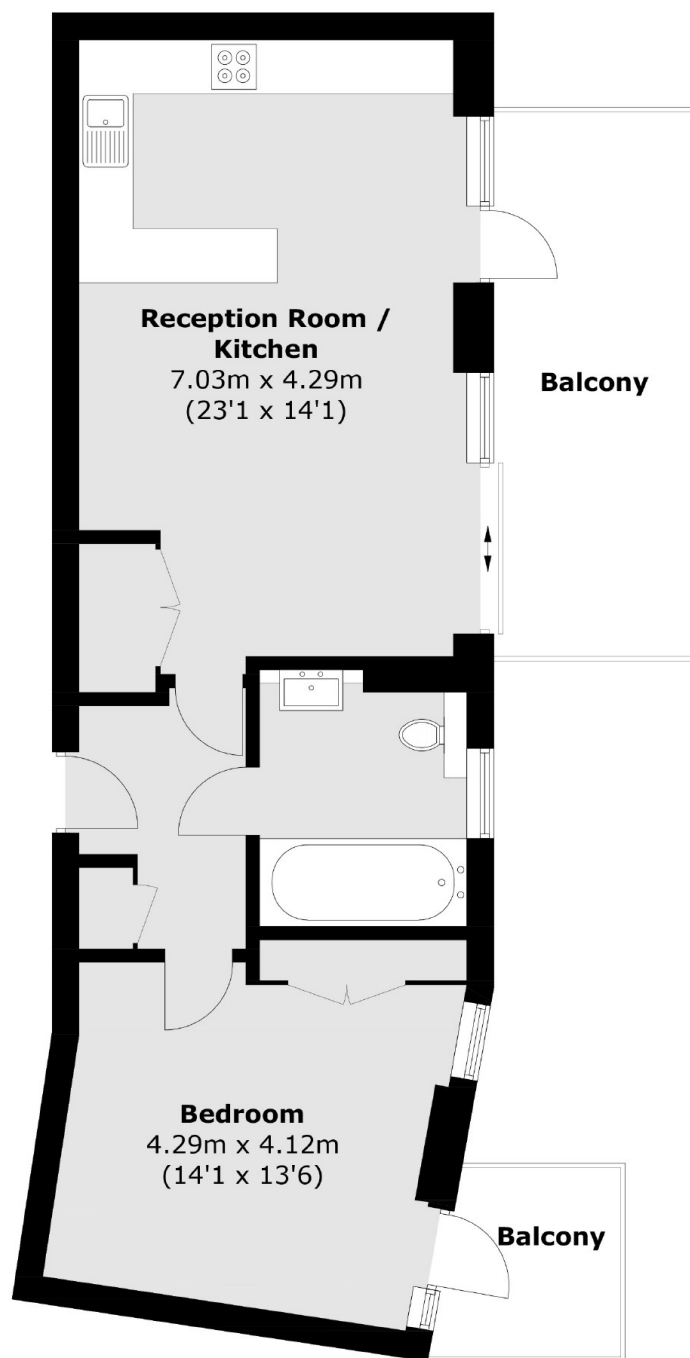
- Modern Flat
- One Bedroom
- Two Balconies
- 250 Year Lease
- Underground Parking
- Underfloor Heating







Knaresborough Drive, London, SW18



Total area (approx.): 60.6 sq. m (652.3 sq. ft)
Balcony : 17.7 sq. m (190.5 sq. ft)