



Roehampton Lane, SW15

£375,000

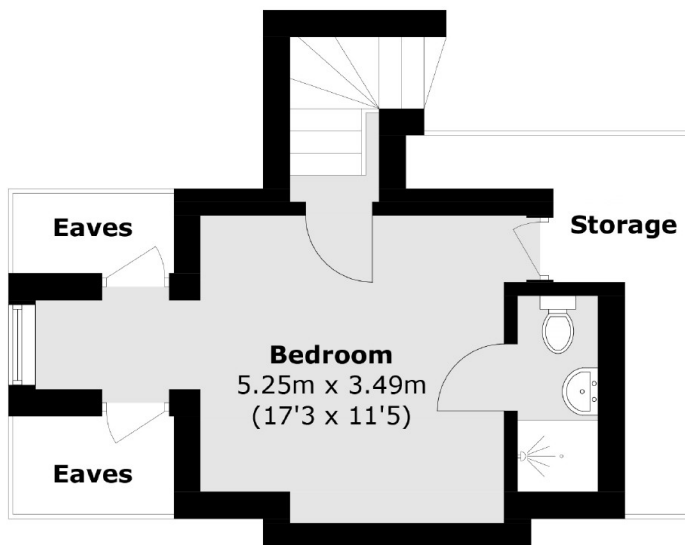
This Victorian conversion flat over the first and second floors has two bedrooms, two bathrooms, a long lease, loads of storage and an open-plan Kitchen.

Roehampton Lane connects the A3 to Upper Richmond Road. There is a Little Waitrose nearby and the flat is close to Putney Heath. Just outside the flat is a bus stop for the 85 (Kingston to Putney Bridge), 265 (Tolworth to Putney Bridge), 170 (Victoria to Roehampton), 969 (Whitton to Roehampton), and N72 bus routes.

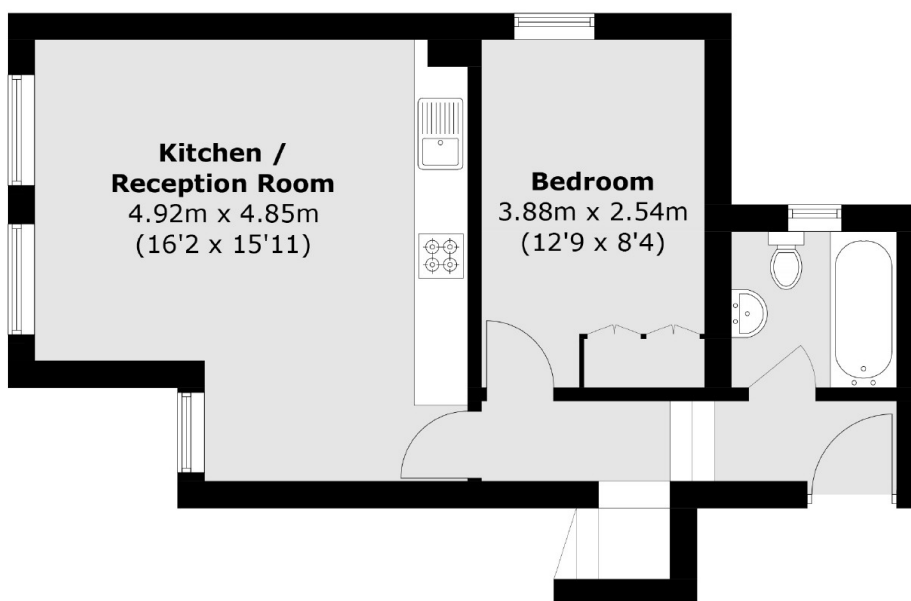
Features

- Victorian Conversion
- Two Bedrooms
- Two Bathrooms
- 125 Year Lease from 2006
- Split Level
- No Chain

Roehampton Lane, London, SW15



Second Floor



First Floor

Total area (approx.): 60.6 sq. m (652.3 sq. ft)
(Excluding Eaves / Storage)