



Northweald Lane, KT2

£1,250,000

Benefiting from a semi-rural feel is this stunning end of terrace town house offering 1,930 sq ft of stylish accommodation. The property has been extended by the current owners and offers the rarity of a south facing roof terrace which enjoys elevated views over Ham Lands.

Northweald Lane is located within the Royal Park Development and is conveniently situated for the River Thames, Ham Lands, Ham Common and Ham Parade, whilst Richmond Park's Ham Gate offers over 2,500 acres of Royal parkland to enjoy. Access to both Richmond and Kingston centres are incredibly convenient and the property falls within the catchment for a choice of outstanding schools.

Features

- Four Bedrooms
- L-shaped reception room
- Kitchen/Dining Room
- Three Bath/Shower Rooms
- Garage & Off Street Parking
- Garden & Roof Terrace



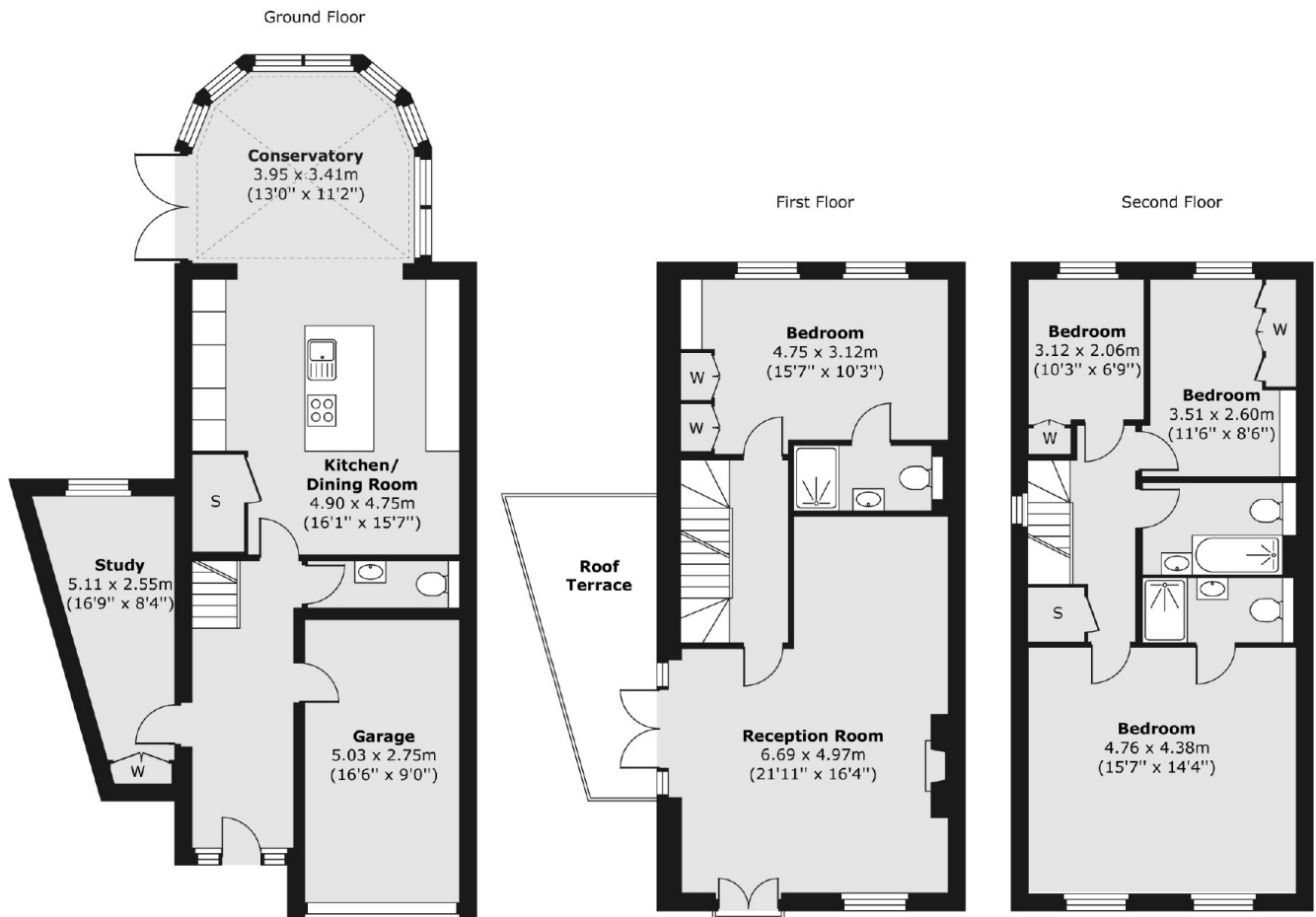
Northweald Lane, Kingston Upon Thames, KT2

The extended ground floor accommodation consists of a large entrance hall, a spacious fully fitted kitchen/dining room with integrated appliances leading to a conservatory with French doors leading to the rear garden, a study, a cloakroom and an integral garage. The first floor accommodation consists of a double aspect spacious L-shaped reception room with a feature fireplace with French doors leading to a south facing roof terrace which enjoys elevated views over and across Ham Lands and towards the River Thames and a double bedroom with fitted wardrobes and a modern ensuite shower room. The second floor consists of a landing with a storage cupboard, a master double bedroom with a modern ensuite shower room, a double bedroom with fitted wardrobes, a large single bedroom with a fitted wardrobe and a modern family bathroom. Outside to the front is a small garden with flower and shrub displays, hardstanding provides off street parking for one vehicle with an additional allocated parking space. To the rear is a landscaped garden which is mostly laid to lawn with established flower and shrub borders rest laid to cobble stone patio and gravel.





Northweald Lane, Kingston Upon Thames, KT2



Total area (approx.) 179.27 sq. m (1,930 sq. ft)
Roof Terrace area (approx.) 10.35 sq. m (111 sq. ft)

Contact

To arrange a viewing call our office on the number below or visit our website.



Energy Rating: . We aim to make our particulars both accurate and reliable. However they are not guaranteed; nor do they form part of an offer or contract. If you require clarification on any points then please contact us, especially if you're traveling some distance to view. Please note that appliances and heating systems have not been tested and therefore no warranties can be given as to their good working order.