



## Bowness Crescent, SW15

£895,000

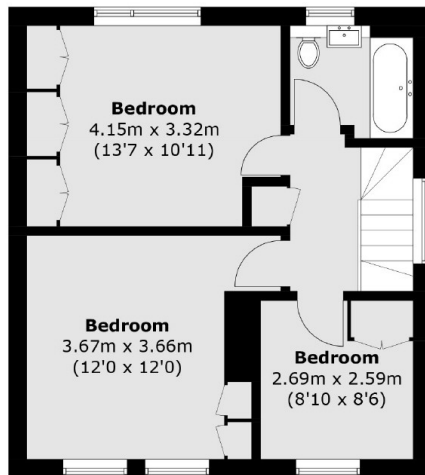
A three bedroom, semi-detached, family home located in a popular residential area that benefits from a large ground floor extension and no onward chain. The spacious ground floor has a large through lounge, kitchen, utility room and a ground floor WC. In addition is the large, full width rear extension ensuring there is plenty of living space for the whole family.

Bowness Crescent is within a popular residential area located midway between Wimbledon and Kingston, within easy access to local shops and the A3.

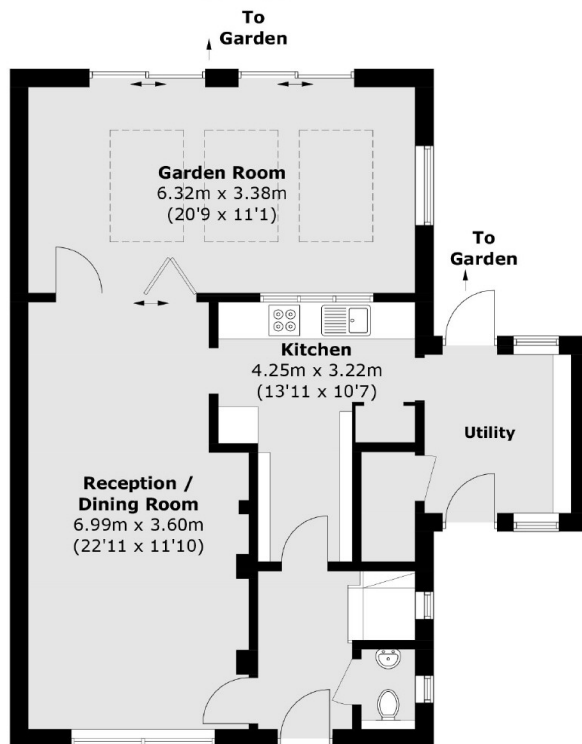
### Features

- Three Bedrooms
- Semi-Detached
- Extended To The Ground Floor
- No Onward Chain
- Off-Street Parking
- Large Garden Room

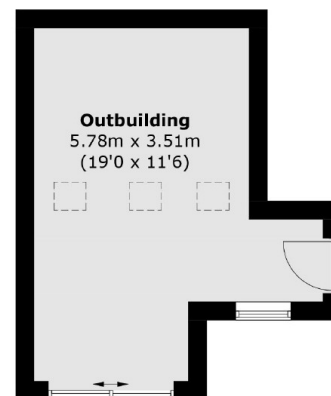
# Bowness Crescent, London, SW15



**First Floor**



**Ground Floor**



**(Not Shown In Actual  
Location / Orientation)**

Total area (approx.): 118.8 sq. m (1,278.7 sq. ft)  
Outbuilding: 21.1 sq. m (227.1 sq. ft)