



Villiers Road, KT1

£575,000

This is a stunning, two/three bedroom ground floor maisonette with versatile accommodation and direct access onto a large private garden. Having been thoroughly updated by the current owner, the end result is this impressive, stylish home that has managed to perfectly retain all of the original charm and character of the building with sash windows and fireplaces in every room.

The maisonette is located on Villiers Road equidistant to Kingston and Surbiton, ideal for those looking for the faster rail links into London from Surbiton Station yet still enjoying all the benefits of Kingston town centre and the River Thames.

Features

- Two Double Bedrooms
- Living Room With Fireplace
- Large Kitchen/Sitting Room
- Fully Resurbished
- Private Garden
- Period Features



Villiers Road, KT1

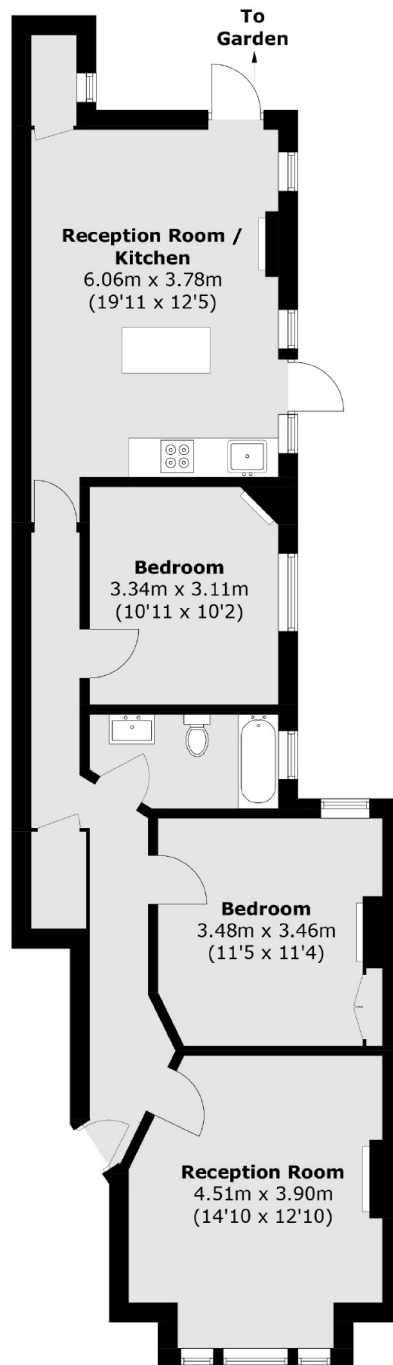
As you enter the property, you are immediately greeted by the large entrance hall with a quality herringbone flooring which continues throughout the property, other than the carpeted reception room located to the front of the building. This could also be utilised as another large double bedroom with a large square bay, double glazed, sash window and an attractive period fireplace.

Both bedrooms are double, again with fireplaces and sash windows. To the rear is the fabulous, double aspect, open plan kitchen/reception room. A fine example of how the owner has retained the original character with the period fireplace and windows yet with a smart modern feel. The kitchen and reception areas are separated by a large central island which also doubles as a dining table. There is direct access to the garden with doors to the side and rear and the exposed steel beams are an additional unique feature.

Outside to the back is the immaculate, private garden with four sections, a large paved patio, artificial lawn, planting area and a large raised decking area. There is also a rear car/pedestrian access.



Villiers Road, Kingston Upon Thames, KT1



Total area (approx.): 77.0 sq. m (828.8 sq. ft)