



## St. John's Terrace, SW15

£3,250 Per calendar month

This impressive four double bedroom home is generously spread over three floors and is moments to Richmond Park and Wimbledon Common. Ideal for a family with a front reception room and large open plan kitchen/diner at the rear.

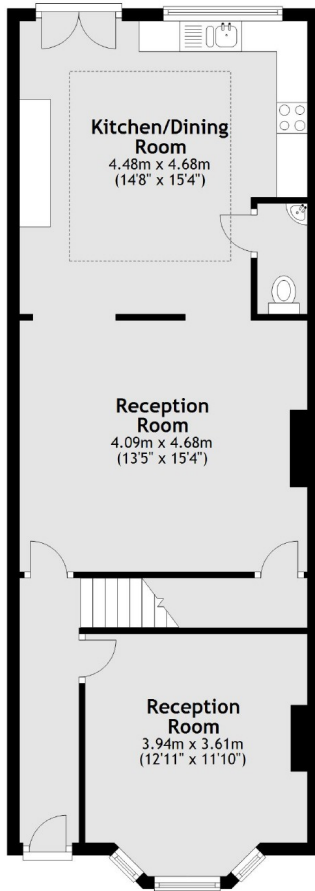
The house is adjacent to Richmond Park and situated within the sought-after Kingston Vale area, close to both Putney and Wimbledon. The property is ideal for easy access to the A3 with its links into London and Guildford.

### Features

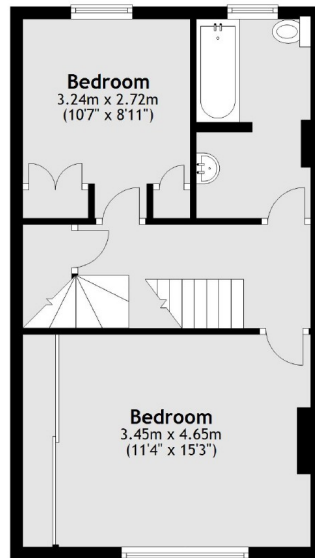
- Spread Over Three Floors
- Off Street Parking
- Large Garden
- Great Location
- Front Reception Room
- Kitchen/Diner

# St. John's Terrace, London, SW15

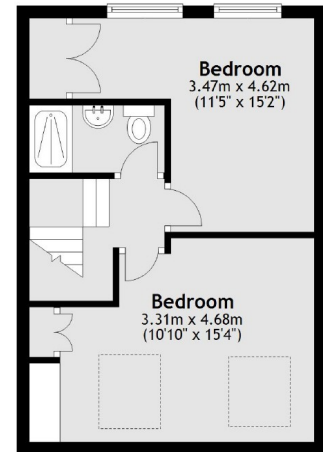
Ground Floor



First Floor



Second Floor



Total area: approx. 136.0 sq. metres (1464.2 sq. feet)